



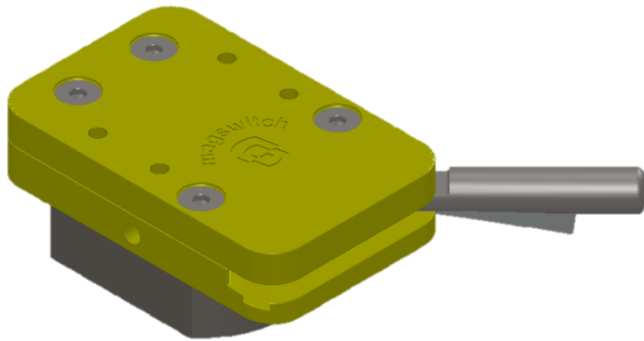
Magswitch Technology, Inc.
 1355 Horizon Ave
 Lafayette, CO 80026
 Magswitch.com.au
 303-468-0662

Magswitch MagMount 300

P/N: 8100595

The Magswitch MagMount 300 is a single lever operation switchable magnet that allows for easy movement and placement of a tool. It is ideal for mounting fixtures and attachments to a ferrous surface with strong hold. The actuation lever has a locking mechanism to avoid accidental release. Top threaded holes allow this to be a versatile magnetic mount.

WARNING!
Do Not Operate Unless In
Contact With Ferrous Target



SPECIFICATIONS	
P/N: 8100595 - MAGSWITCH MagMount 300	
Max Breakaway*	246 lbs/111 kg
Full Saturation Thickness	3/16 in /4.75 mm
Net Weight	1.2 lbs/0.5 kg
Overall Height	1.7 in /43.8 mm
Magnetic Pole Footprint	71.8 x 51.5 mm



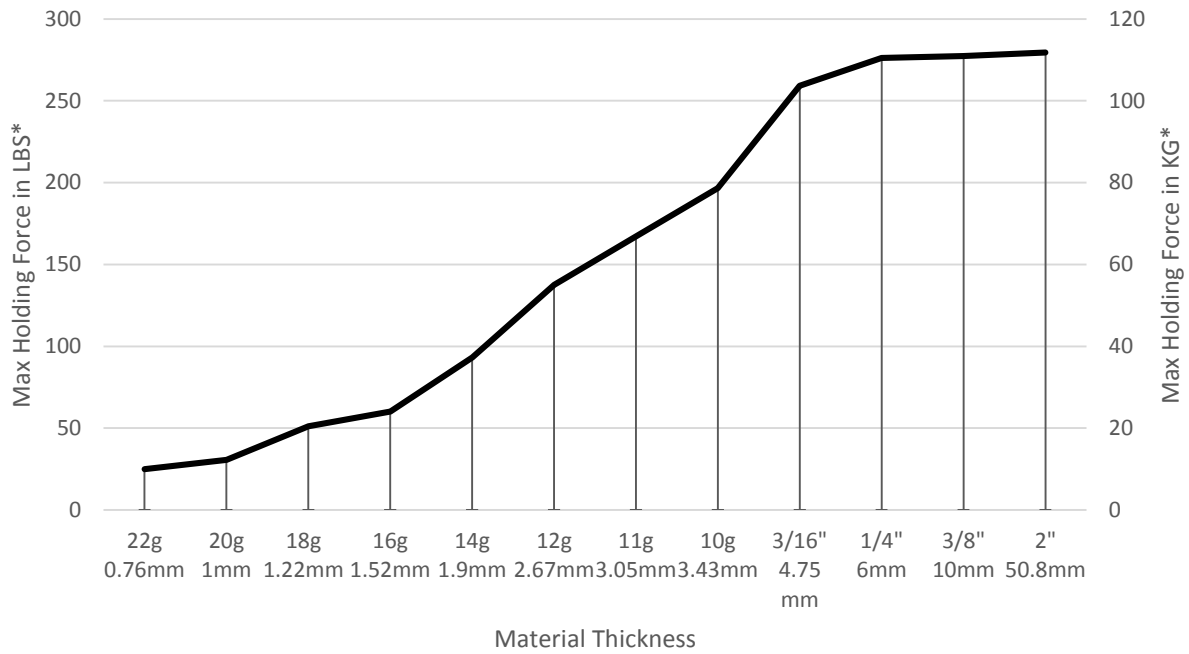
WORKING SURFACE
BLACK=BEST
GRAY=MODERATE



Part Number 1101206
 Revision Date: March 8, 2016

* Max Breakaway determined in laboratory environment on 2" thick SAE1018 Steel with surface roughness 63 micro inches. Many factors contribute to the actual breakaway force in each application. Always test the magswitch in each application before deployment. Refer to the magswitch information booklet for more information.

Magswitch MagMount 300 Breakaway Data vs. Thickness

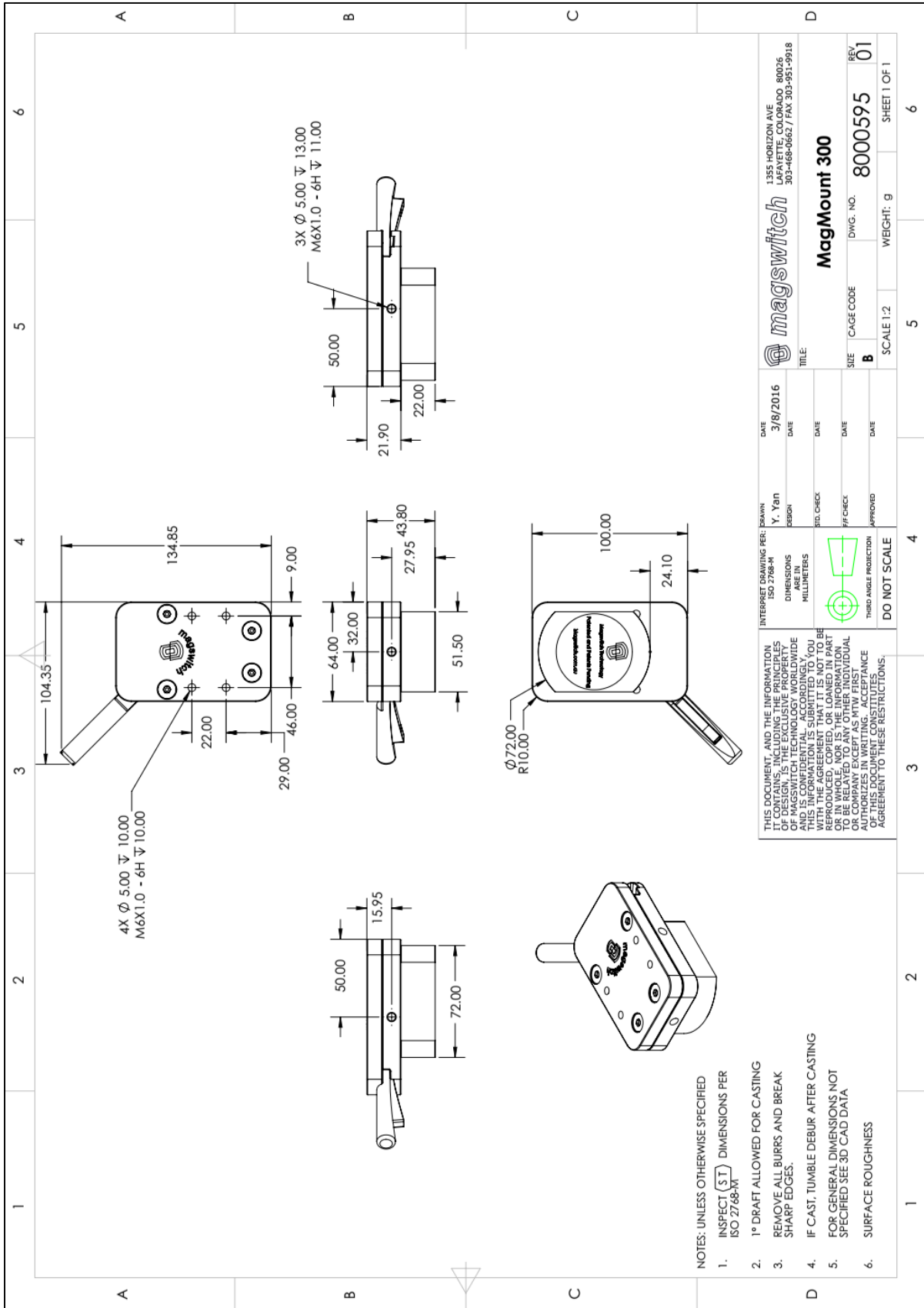


Part Number 1101206
 Revision Date: March 8, 2016

* Max Breakaway determined in laboratory environment on 2" thick SAE1018 Steel with surface roughness 63 micro inches. Many factors contribute to the actual breakaway force in each application. Always test the magswitch in each application before deployment. Refer to the magswitch information booklet for more information.



Part Number 1101206
Revision Date: March 8, 2016



- NOTES: UNLESS OTHERWISE SPECIFIED
1. INSPECT (ST) DIMENSIONS PER ISO 2768-M
 2. 1° DRAFT ALLOWED FOR CASTING
 3. REMOVE ALL BURRS AND BREAK SHARP EDGES.
 4. IF CAST, TUMBLE DEBUR AFTER CASTING
 5. FOR GENERAL DIMENSIONS NOT SPECIFIED SEE 3D CAD DATA
 6. SURFACE ROUGHNESS

THIS DOCUMENT, AND THE INFORMATION IT CONTAINS, INCLUDING THE PRINCIPLES OF MAGSWITCH TECHNOLOGY WORLDWIDE AND IS CONFIDENTIAL. ACCORDINGLY, YOU SHALL NOT REPRODUCE, COPIED, OR LOANED IN PART OR BE REPRODUCED FOR USE BY ANY INDIVIDUAL OR COMPANY EXCEPT AS MTW FIRST AUTHORIZES IN WRITING. ACCEPTANCE OF THIS DOCUMENT SHALL BE DEEMED AN AGREEMENT TO THESE RESTRICTIONS.

INTERNET DRAWING FILE: 3/8/2016
DATE
Y. Yan
DRAWN
REGION
DIMENSIONS
ISO 2768-M
MILLIMETERS
THIRD ANGLE PROJECTION
DO NOT SCALE

magswitch 1355 HORIZON AVE
LAFAYETTE, COLORADO 80026
303-468-0662 / FAX 303-951-9918

MagMount 300

DATE DATE DATE DATE DATE
STD. CHECK #F CHECK APPROVED

SIZE CAGE CODE DWG. NO. REV.
B 8000595 01

SCALE 1:2 WEIGHT: 9 SHEET 1 OF 1