



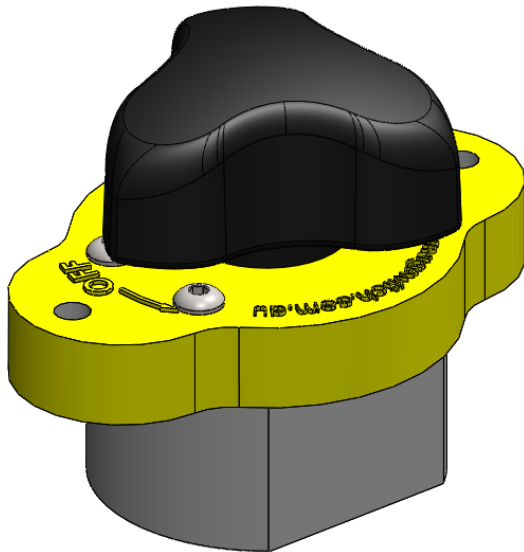
Magswitch Technology, Inc.  
 1355 Horizon Ave.  
 Lafayette, CO 80026  
 Magswitch.com.au  
 303-468-0662

# Magswitch MagJig 150

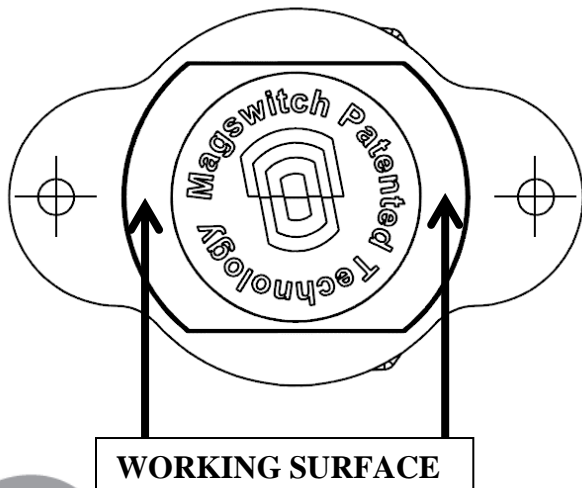
## P/N: 8100005

Magswitch MagJigs are ideal for downward pressure clamping. All MagJigs come with a 3/4" standoff for flush mount. Simply drill a hole in the fixturing material and place the clamp in. The MagJigs come with screw holes so you can secure the jig in the fixture. We recommend at least two MagJigs per fixture to minimize slippage. Create fences, assembly jigs, cutting fixtures, blade guards, work supports or anything that makes your work faster, safer and easier.

**WARNING!**  
**Do Not Operate Unless In**  
**Contact With Ferrous Target**



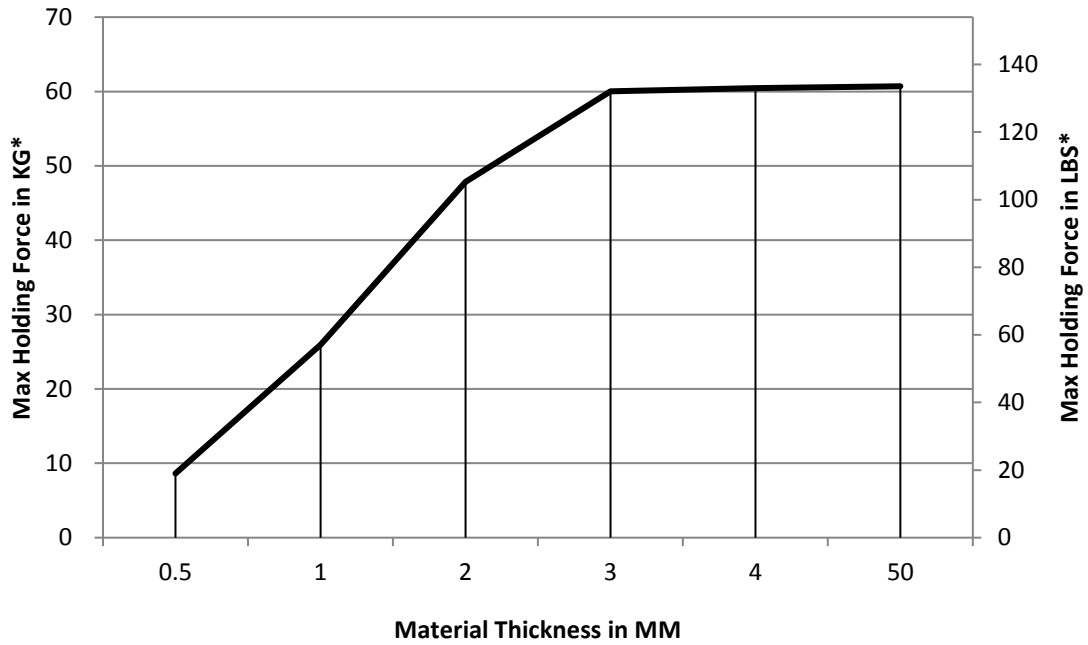
SPECIFICATIONS	
<b>P/N: 8100005 - MAGSWITCH MagJig 150</b>	
Max Breakaway*	133 lbs/60.5 kg
Full Saturation Thickness	0.12" / 3 mm
2:1 Shear Working Load*	27.6 lbs/12.5 kg
Net Weight	0.5 lbs/0.2 kg
Overall Height	53 mm
Magnetic Pole Footprint	40mm x 31mm



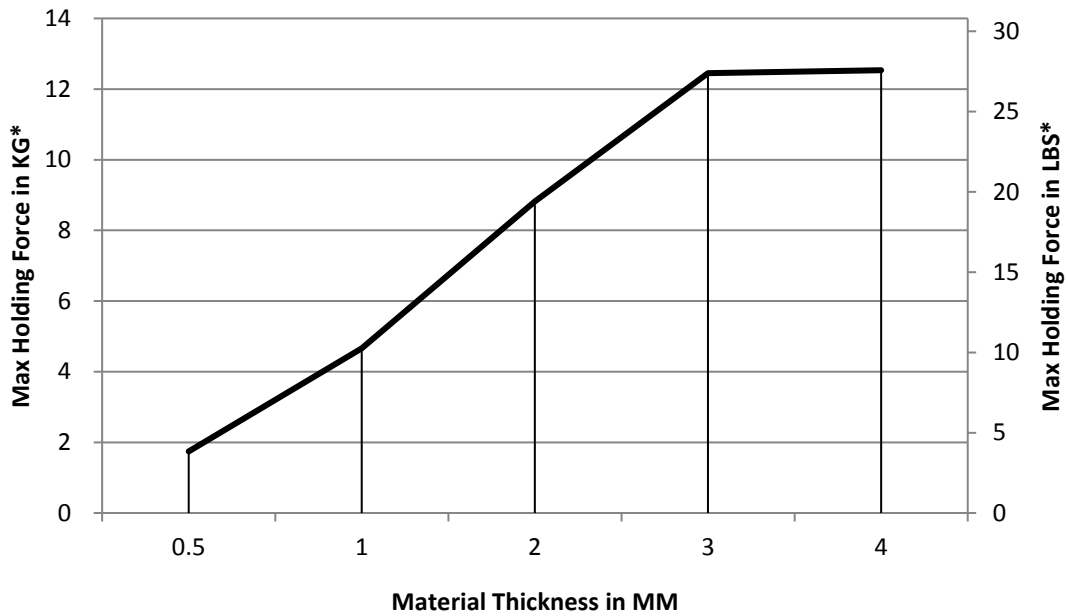
Part Number 1101285  
 Revision Date: Feb 8, 2018

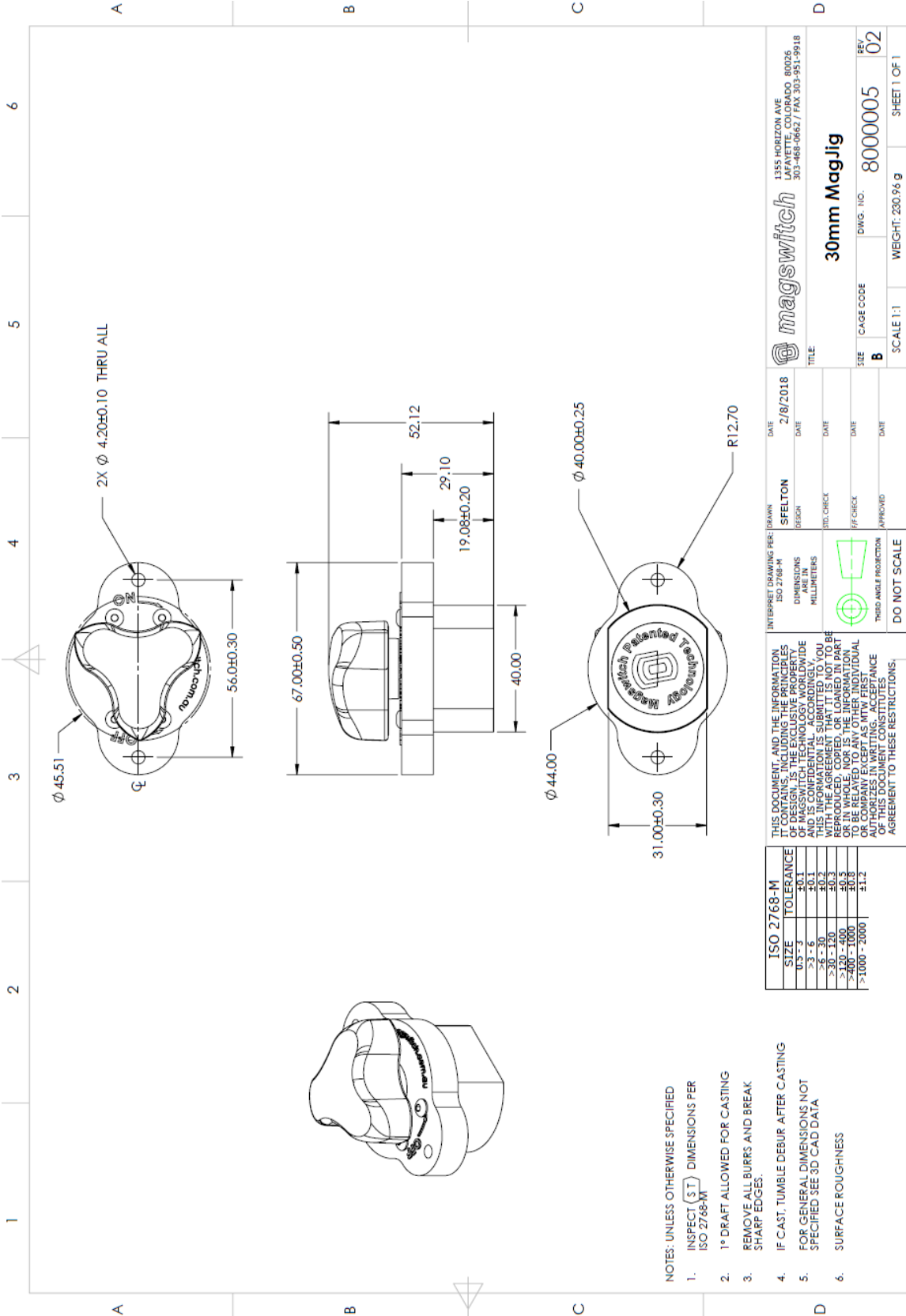
\* Max Breakaway determined in laboratory environment on 2" thick SAE1018 Steel with surface roughness 63 micro inches. Many factors contribute to the actual breakaway force in each application. Always test the magswitch in each application before deployment. Refer to the magswitch information booklet for more information.

### Magswitch MagJig 150 Breakaway Vs. Thickness



### Magswitch MagJig 150 Shear Data Vs. Thickness





<b>ISO 2768-M</b> SIZE TOLERANCE U.S. - 3 ±0.1 >3 - 6 ±0.1 >6 - 12 ±0.2 >12 - 30 ±0.3 >30 - 120 ±0.5 >120 - 400 ±0.8 >400 - 1000 ±1.2 >1000 - 2000 ±1.2		THIS DOCUMENT, AND THE INFORMATION CONTAINED HEREIN, IS THE EXCLUSIVE PROPERTY OF MAGSWITCH TECHNOLOGY WORLDWIDE. THIS INFORMATION IS SUBMITTED TO YOU WITH THE AGREEMENT THAT IT IS NOT TO BE REPRODUCED, COPIED, OR LOANED IN PART OR COMPANY EXCEPT AS MAY FIRST BE AGREED TO BY THE COMPANY. YOUR ACCEPTANCE OF THIS DOCUMENT CONSTITUTES AN AGREEMENT TO THESE RESTRICTIONS.		DO NOT SCALE THIRD ANGLE PROJECTION 		INTERPRET DRAWING PER: (DRAWN) SFELTON (DESIGN) (DATE) 2/8/2018 (DIMENSIONS) ARE IN MILLIMETERS (DTC CHECK) (DATE) (DATE) (DATE) (OFF CHECK) (DATE) (DATE) (DATE) (APPROVED) (DATE) (DATE) (DATE)		<b>magswitch</b> 1355 HORIZON AVE LAFAYETTE, COLORADO 80026 303-465-0662 / FAX 303-551-9918		<b>30mm MagJig</b> DWG. NO.: 8000005 SCALE 1:1 WEIGHT: 230.94 g SHEET 1 OF 1	
--	--	---	--	--	--	--	--	--	--	---	--

- NOTES: UNLESS OTHERWISE SPECIFIED
1. INSPECT (S T) DIMENSIONS PER ISO 2768-M
  2. 1° DRAFT ALLOWED FOR CASTING
  3. REMOVE ALL BURRS AND BREAK SHARP EDGES.
  4. IF CAST, TUMBLE DEBUR AFTER CASTING
  5. FOR GENERAL DIMENSIONS NOT SPECIFIED SEE 3D CAD DATA
  6. SURFACE ROUGHNESS

Part Number 1101285  
 Revision Date: Feb 8, 2018

