



TM

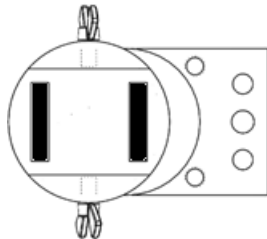
Magswitch Technology, Inc.  
1355 Horizon Avenue  
Lafayette, Colorado 80026  
Magswitch.com.au  
303-468-0662

# Magswitch AR30 Laser Fixture Tool

## P/N: 81401134

Designed specifically for use as a fixturing tool for use on welding and cutting applications, the MagSwitch Laser Fixture Tool increases process efficiency and by decreasing set up time. The fixture tool clamps inside the part perimeter, allowing for optimized laser path. The “AR” series allows complete customization of pole shapes to provide the best hold on your hard to grip parts. The copper shield will protect the unit from any welding slag.

**Note: You may have to design and fabricate custom pole shoes depending on your application for optimal performance.**



**WORKING SURFACE**  
**BLACK = BEST**  
**GRAY=MODERATE**

**WARNING!**  
**Do Not Operate Unless In**  
**Contact With Ferrous Target**

### SPECIFICATIONS

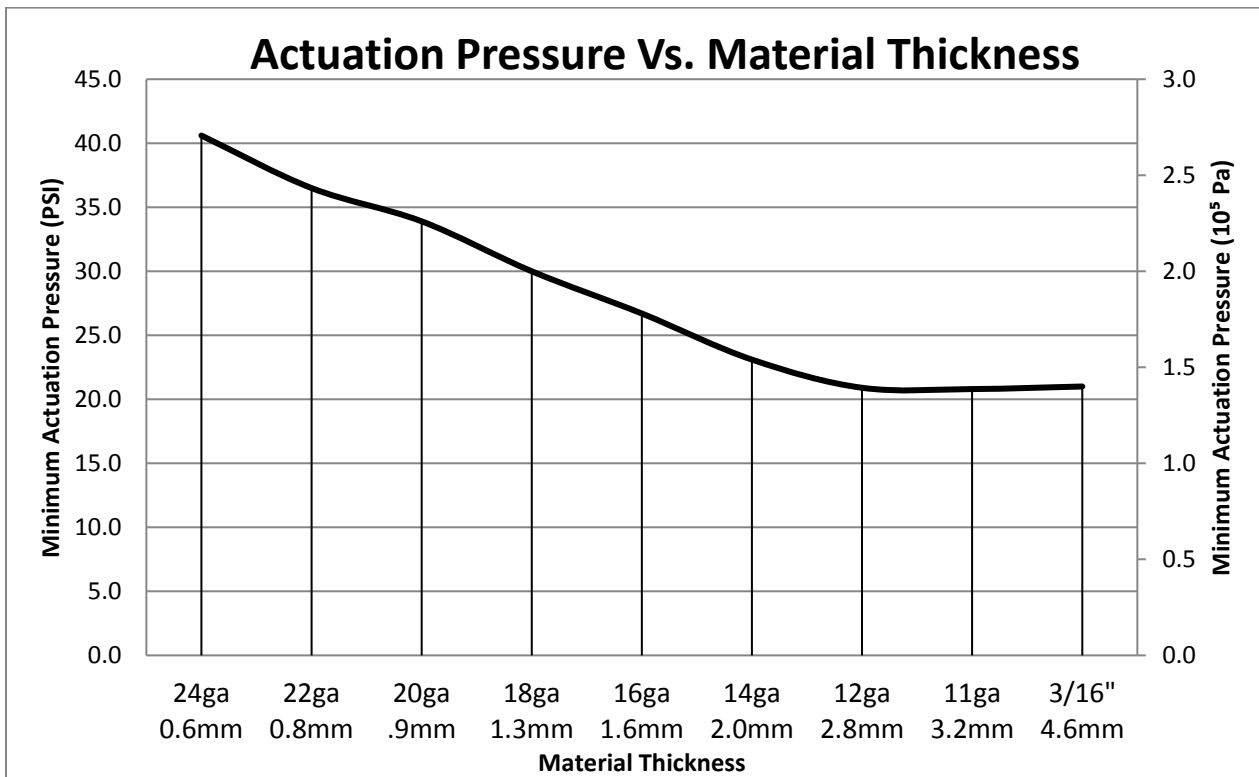
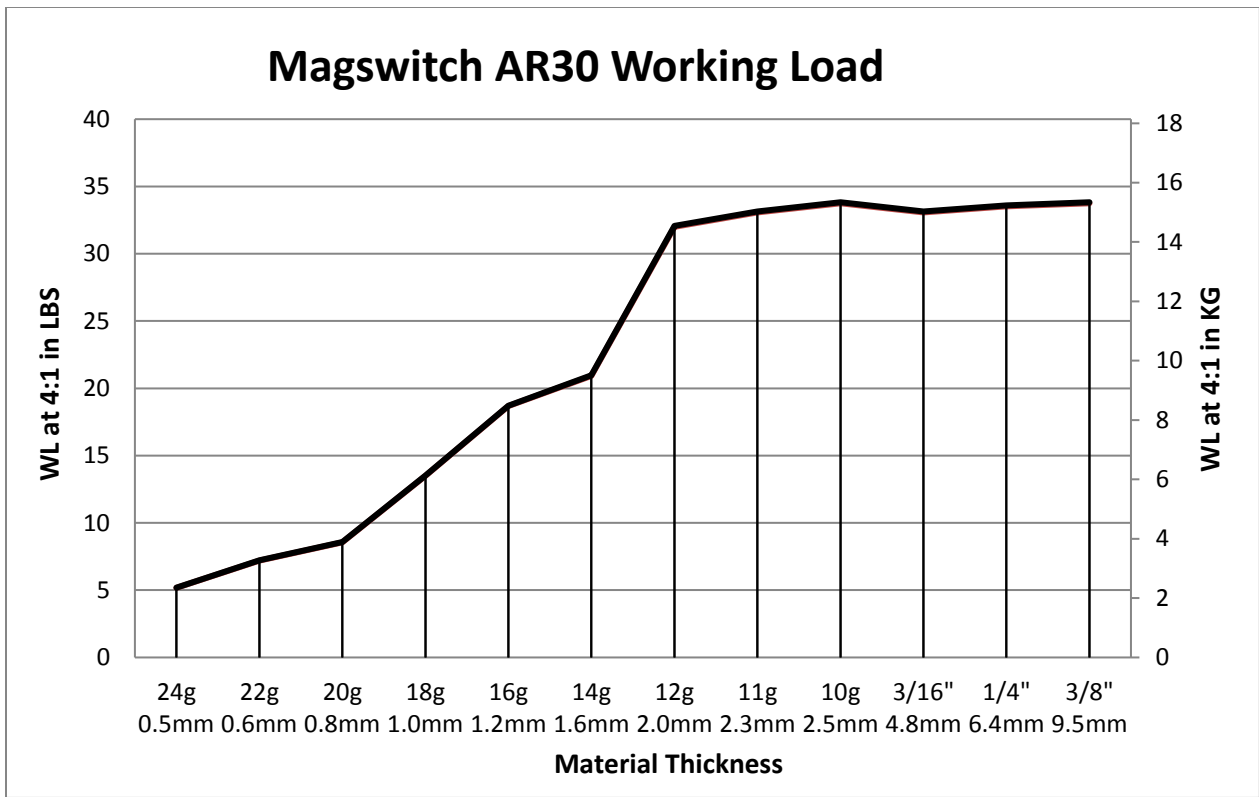
#### P/N: 81401134 - MAGSWITCH AR30 Laser Fixture Tool

Max Breakaway*	134 lbs/60.9 kg
Working Load 4:1*	33.5 lbs/15.2 kg
Full Saturation Thickness	10 ga/3.5 mm
Max Shear 2:1*	15 lbs/6.8 kg
Minimum Thickness for De-Stack	10 ga/3.5 mm
Min Actuation Pressure	21 psi/1.45x10 <sup>5</sup> pa
Max Actuation Pressure	100 psi/6.9x10 <sup>5</sup> pa
Off Target Actuation Pressure	48 psi/3.3x10 <sup>5</sup> pa
Net Weight	2.42 lbs/1.1 kg
Air Port Thread	M5x0.8
Mounting Thread	2-8mm Dowel / 1-M8 Clearance Hole
Overall Height	145 mm
Magnetic Pole Footprint	36x31.2 mm

\* Max Breakaway determined in laboratory environment on 2" thick SAE1018 Steel with surface roughness 63 micro inches. Many factors contribute to the actual breakaway force in each application. Always test the magswitch in each application before deployment. Refer to the magswitch information booklet for more information.

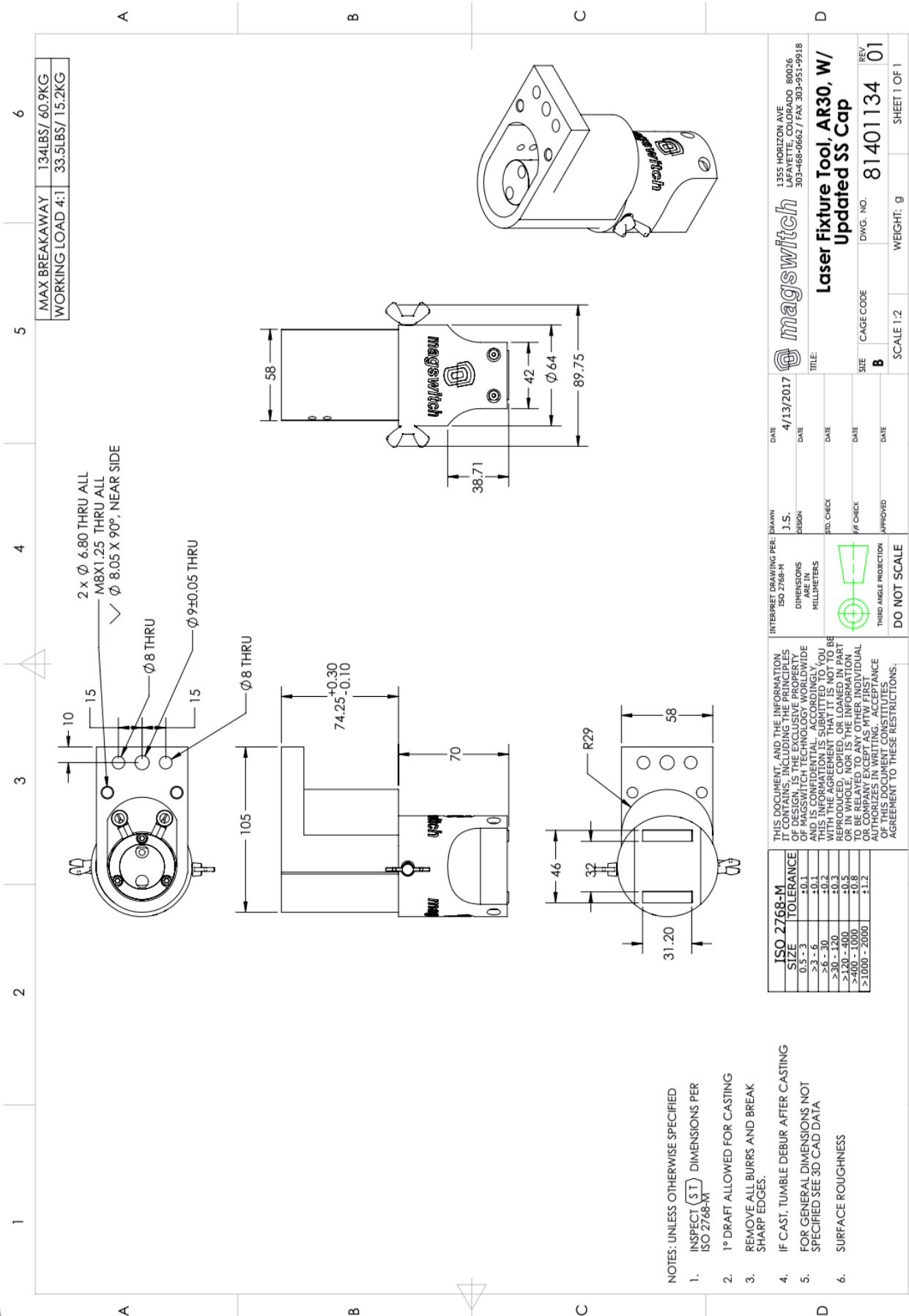


Part Number 1101257  
Revision Date: April 13, 2017



Part Number 1101257  
 Revision Date: April 13, 2017

\* Max Breakaway determined in laboratory environment on 2" thick SAE1018 Steel with surface roughness 63 micro inches. Many factors contribute to the actual breakaway force in each application. Always test the magswitch in each application before deployment. Refer to the magswitch information booklet for more information.



Part Number 1101257  
 Revision Date: April 13, 2017