



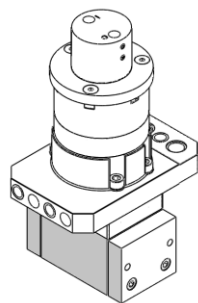
Magswitch Technology, Inc.
1355 Horizon Ave
Lafayette, CO 80026
Magswitch.com.au
303-468-0662

Magswitch AR50 NAAMS P/N: 8140680

Magswitch “AR” series is explicitly designed for use with pole shoes. Pole shoes must be attached to the unit in order to maximize breakaway force and minimize residual magnetism. Each Magswitch “AR” unit comes equipped with one set of dowelled pole shoes. The “AR” series allows complete customization of pole shapes to provide the best hold on your hard to grip parts. The “NAAMS” Mount is a universal, consistent, and precision effective way to attach these devices to robots and other mounts.

Note: You may have to design and fabricate custom pole shoes depending on your application for optimal performance.

WARNING!
**Do Not Operate Unless In
Contact With Ferrous Target**



WORKING SURFACE
BLACK=BEST
GRAY=MODERATE

SPECIFICATIONS

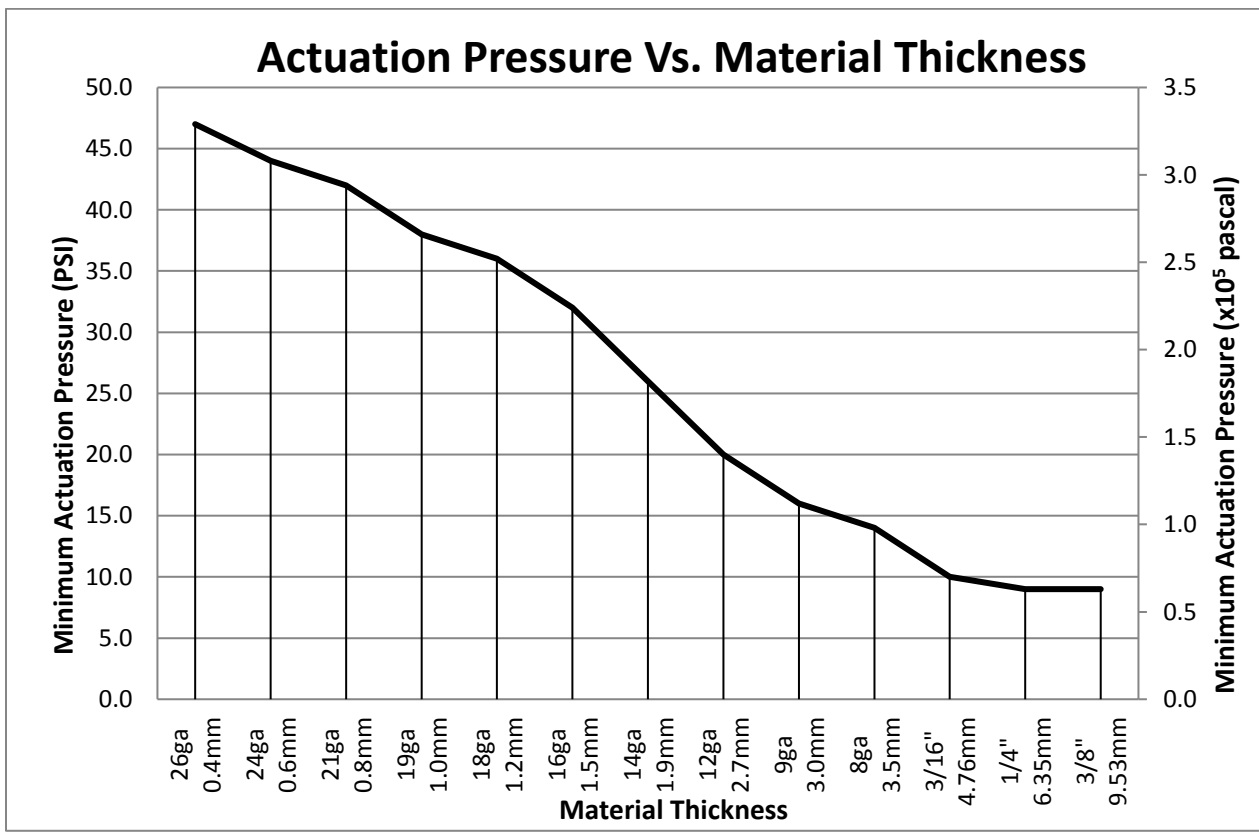
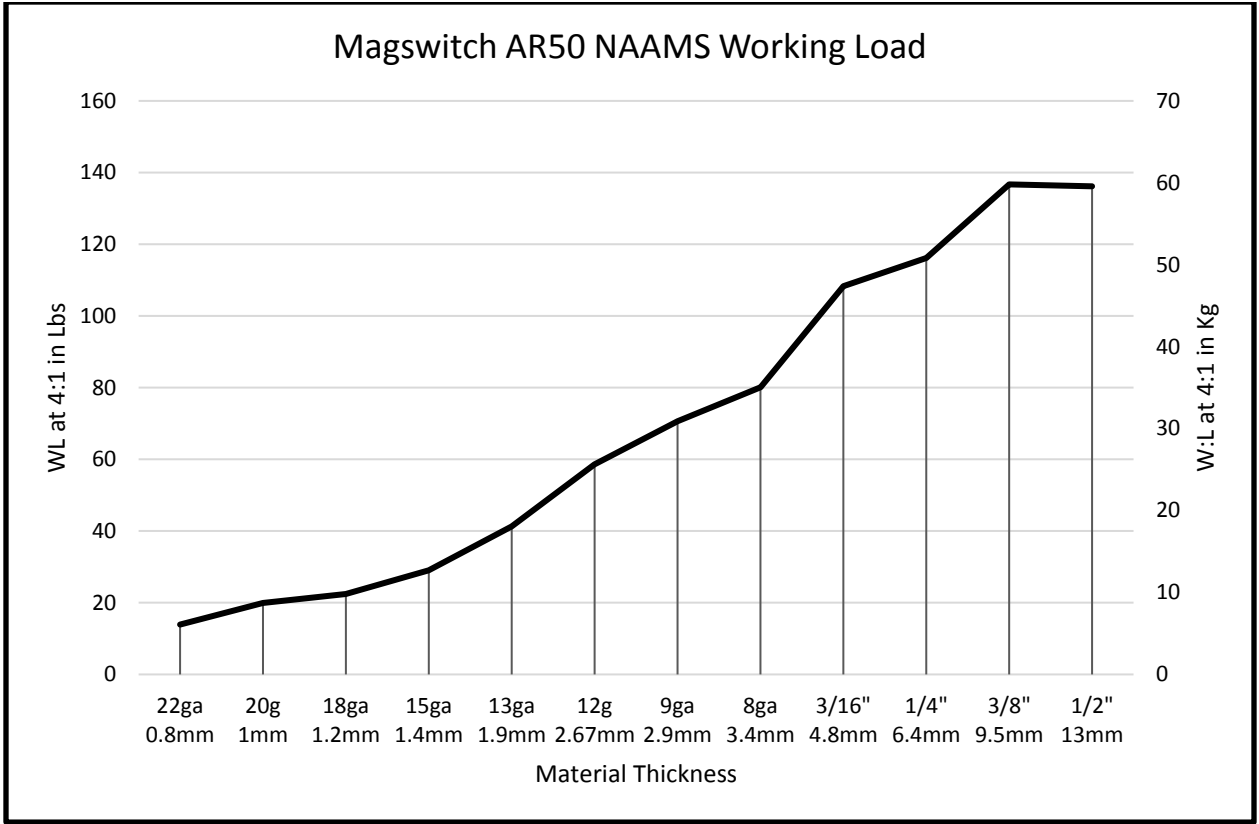
P/N: 8140680 - MAGSWITCH AR50 NAAMS

Max Breakaway*	548 lbs/248.6 kg
Working Load 4:1*	137 lbs/62.1 kg
Full Saturation Thickness	3/8" / 9.5 mm
Max Shear 2:1*	34 lbs/15.4 kg
Minimum Thickness for De-Stack	3/8" / 9.5 mm
Min Actuation Pressure	20psi / 1.4x10 ⁵ pa
Max Actuation Pressure	145 psi / 1x10 ⁶ pa
Off Target Actuation Pressure	55 psi / 3.8x10 ⁵ pa
Net Weight	6.1 lbs / 2.8 kg
Air Port Thread	M5x0.8
NAAMS Mount	2:M10x1.5/4:Dia8.0/2:Dia11.0
Overall Height	182 mm
Magnetic Pole Footprint	64x51.75 mm

* Max Breakaway determined in laboratory environment on 2" thick SAE1018 Steel with surface roughness 63 micro inches. Many factors contribute to the actual breakaway force in each application. Always test the magswitch in each application before deployment. Refer to the magswitch information booklet for more information.

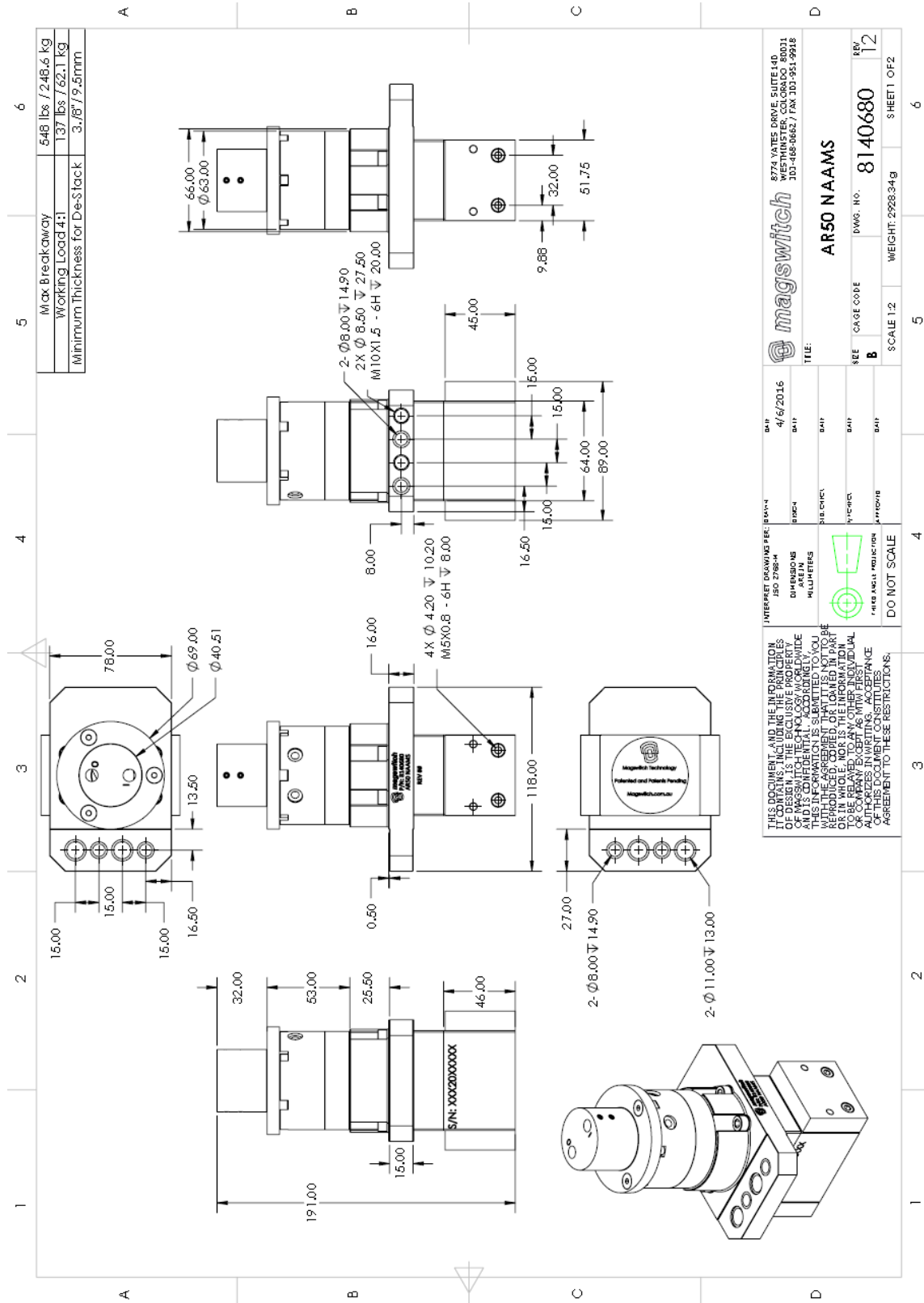
Part Number 110870
Revision Date: July 24, 2015





Part Number 110870
 Revision Date: July 24, 2015

* Max Breakaway determined in laboratory environment on 2" thick SAE1018 Steel with surface roughness 63 micro inches. Many factors contribute to the actual breakaway force in each application. Always test the magswitch in each application before deployment. Refer to the magswitch information booklet for more information.



		8774 VATES DRIVE, SUITE 140 WESTMINSTER, COLORADO 80031 303-468-0867 / FAX 303-951-9928	
DATE	4/6/2016	TITLE	AR50 NAAMS
DESIGNED BY		REV	12
DRAWN BY		CAGE CODE	8140680
CHECKED BY		WEIGHT	2928.34g
APPROVED BY		SCALE	1:2
INTERPRET DRAWING PER: 8140680 ISO 2768-M DIMENSIONS IN MILLIMETERS		DO NOT SCALE	
THIS DOCUMENT AND THE INFORMATION CONTAINED HEREIN IS THE EXCLUSIVE PROPERTY OF MAGSWITCH TECHNOLOGY, INC. ALL RIGHTS ARE RESERVED. NO PART OF THIS INFORMATION IS TO BE REPRODUCED OR TRANSMITTED IN ANY FORM OR BY ANY MEANS, ELECTRONIC OR MECHANICAL, INCLUDING PHOTOCOPYING, RECORDING, OR BY ANY INFORMATION STORAGE AND RETRIEVAL SYSTEM, WITHOUT THE WRITTEN PERMISSION OF MAGSWITCH TECHNOLOGY, INC.			



Part Number 110870
 Revision Date: July 24, 2015