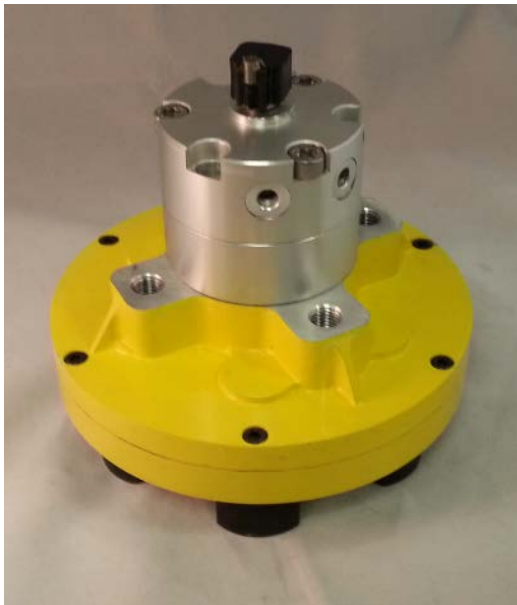




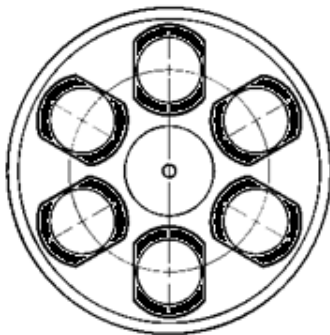
Magswitch Technology, Inc.
1355 Horizon Ave
Lafayette, CO 80026
Magswitch.com.au
303-468-0662

Magswitch M20AY ASC P/N: 8140591

Magswitch “AY” series utilizes field interaction between individual Magswitch units to manipulate magnetic field shape allowing for a deeper or shallower depth of field and increased holding in shear while utilizing a single actuator. This makes the “AY” series the perfect cost effective unit for de-stacking operations and lifting flat steel in shear.



WARNING!
**Do Not Operate Unless In
Contact With Ferrous Target**



**WORKING SURFACE BLACK
= BEST
GRAY = MODERATE**

SPECIFICATIONS

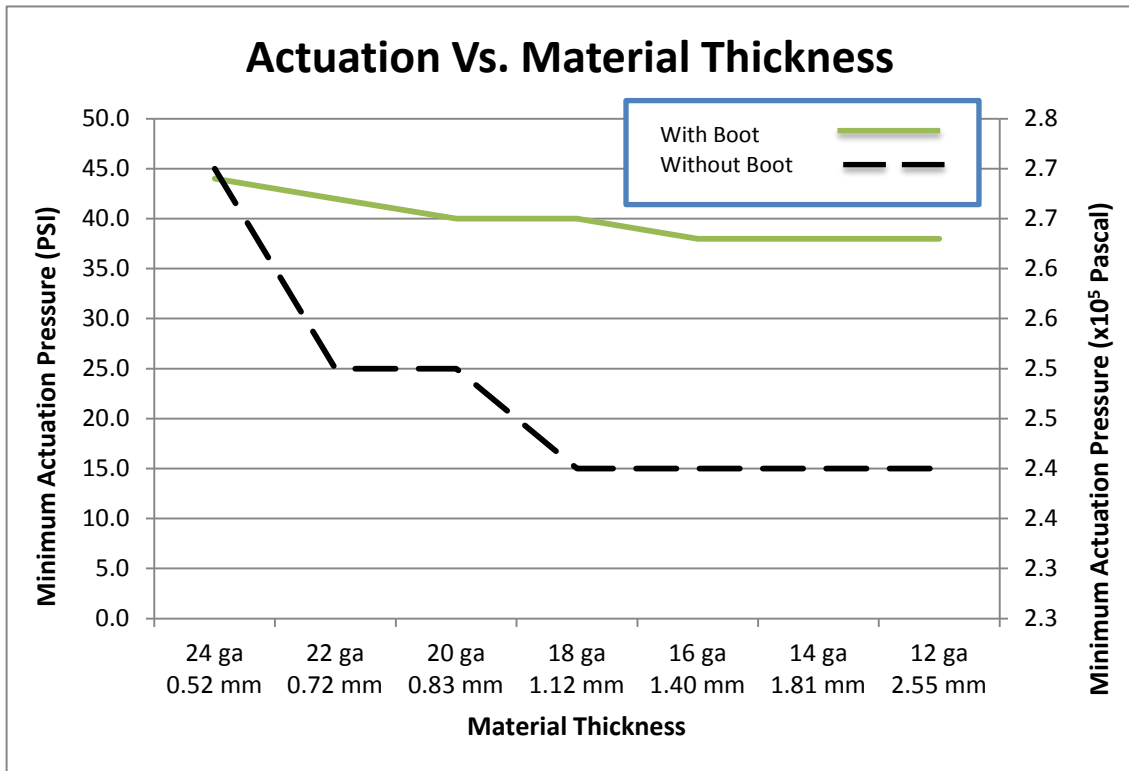
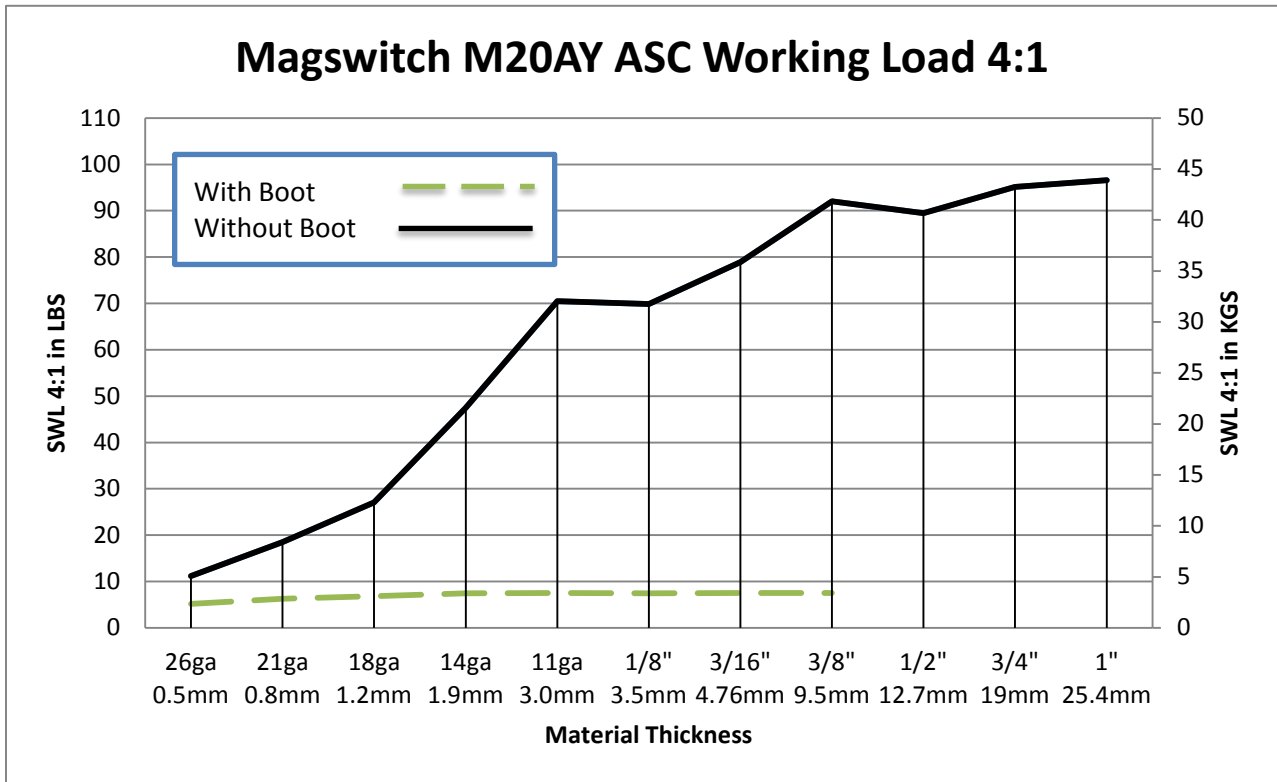
P/N: 8140591 - MAGSWITCH M20AY ASC

Max Breakaway*	392.8 lbs/178.5 kg
Working Load 4:1*	98.2 lbs/44.6 kg
Full Saturation Thickness	3/8"/9.5 mm
Max Shear 2:1*	39.1 lbs/17.8 kg
Minimum Thickness for De-Stack	3/16"/4.75 mm
Min Actuation Pressure	35 psi/2.5x10 ⁵ pa
Max Actuation Pressure	100 psi/6.9x10 ⁵ pa
Off Target Actuation Pressure	52 psi/3.4 x10 ⁵ pa
Net Weight	3.2 lbs/1.45 kg
Air Port Thread	M5x0.8
Mounting Thread	M8x1.25
Overall Height	126.25 mm
Magnetic Pole Footprint	97.5 mm Diameter

* Max Breakaway determined in laboratory environment on 2" thick SAE1018 Steel with surface roughness 63 micro inches. Many factors contribute to the actual breakaway force in each application. Always test the magswitch in each application before deployment. Refer to the magswitch information booklet for more information.

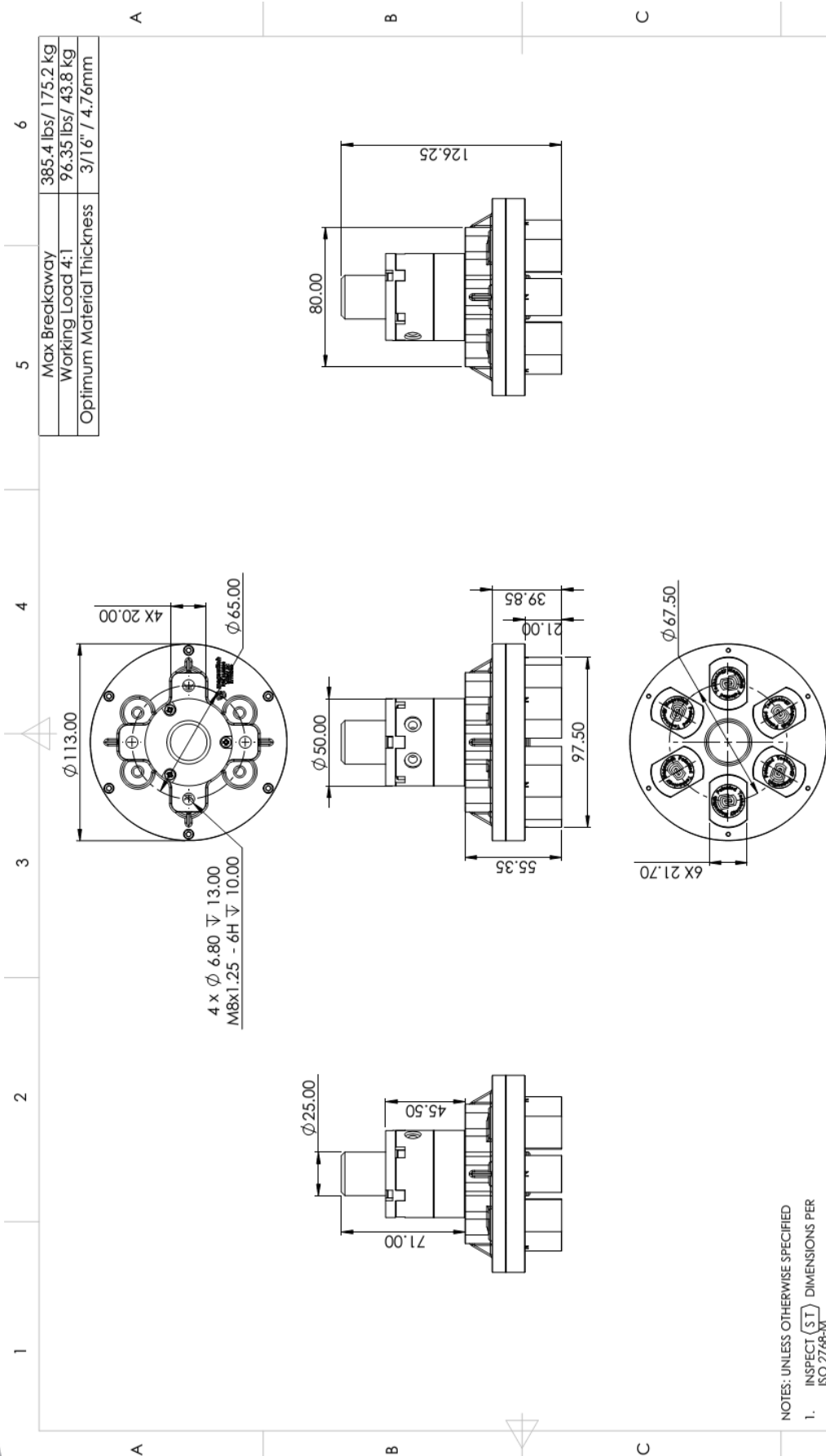


Part Number 110649
Revision Date: January 18, 2016



Part Number 110649
 Revision Date: January 18, 2016

* Max Breakaway determined in laboratory environment on 2" thick SAE1018 Steel with surface roughness 63 micro inches. Many factors contribute to the actual breakaway force in each application. Always test the magswitch in each application before deployment. Refer to the magswitch information booklet for more information.



Max Breakaway	385.4 lbs / 175.2 kg
Working Load 4:	96.35 lbs / 43.8 kg
Optimum Material Thickness	3/16" / 4.76mm

- NOTES: UNLESS OTHERWISE SPECIFIED
- INSPECT (S.T) DIMENSIONS PER ISO 2768-MT
 - 1° DRAFT ALLOWED FOR CASTING
 - REMOVE ALL BURRS AND BREAK SHARP EDGES.
 - IF CAST, TUMBLE DEBUR AFTER CASTING
 - FOR GENERAL DIMENSIONS NOT SPECIFIED SEE 3D CAD DATA
 - SURFACE ROUGHNESS

DATE	1/18/2016	DATE	1/18/2016
DESIGN		DESIGN	
3RD CHECK		3RD CHECK	
2ND CHECK		2ND CHECK	
APPROVED		APPROVED	
INTERPRET DRAWING PER:	ISO 2768-M	DIMENSIONS ARE IN	MILLIMETERS
<p>THIS DOCUMENT AND THE INFORMATION IT CONTAINS, INCLUDING THE PRINCIPLES OF DESIGN, IS THE EXCLUSIVE PROPERTY OF MAGSWITCH TECHNOLOGY WORLDWIDE AND IS NOT TO BE REPRODUCED, COPIED, OR LOANED IN PART OR IN WHOLE, NOR IS THE INFORMATION TO BE DISCLOSED TO ANY INDIVIDUAL OR COMPANY EXCEPT AS MTW FIRST AUTHORIZES IN WRITING. ACCEPTANCE OF THIS DOCUMENT CONSTITUTES AGREEMENT TO THESE RESTRICTIONS.</p>			
		<p>THIRD ANGLE PROJECTION</p>	
DO NOT SCALE			
		<p>8774 YATES DRIVE, SUITE 140 WESTMINSTERY, COLORADO 80031 303-469-0662 / FAX 303-951-9918</p>	
TITLE		M20AY ASC	
SIZE	B	CAGE CODE	8140591
REV	08	DWG. NO.	8140591
SCALE 1:2		WEIGHT: g	
SHEET 1 OF 1		6	



Part Number 110649
Revision Date: January 18, 2016