



Magswitch Technology, Inc.
1355 Horizon Ave
Lafayette, CO 80026
Magswitch.com.au
303-468-0662

Magswitch PLAY20x4 P/N: 8140575

Magswitch LAY series utilizes field interaction between individual magnets to increase depth of field and spread the attractive force over a larger footprint. This allows for greater working loads and increased control over larger work pieces. With customizable pole shoes to fit almost any application, the LAY is a great all around tool that is perfect for picking pipe and round as well as large plate steel.

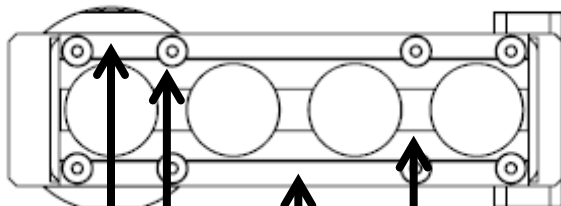


WARNING!
**Do Not Operate Unless In
Contact With Ferrous Target**

SPECIFICATIONS

P/N: 8140575 - MAGSWITCH PLAY20x4

Max Breakaway*	288.42 lbs/131.1kg
Working Load 4:1*	72.1 lbs/32.8kg
Full Saturation Thickness	3/8" / 9.5mm
Max Shear 2:1*	41.8 lbs/19.0 kg
Minimum Thickness for De-Stack	3/8" /9.5 mm
Min Actuation Pressure	30 psi/2.1x10 ⁵ pa
Max Actuation Pressure	145 psi/1.0x10 ⁶ pa
Off Target Pressure	56 psi/ 3.9x10 ⁵ pa
Volume of Actuator	15 cm ³
Net Weight	2.62 lbs/1.19 kg
Air Port Thread	M5x0.8
Mounting Thread	M6x1.0, M5x0.8
Overall Height	138.76 mm
Magnetic Pole Footprint	96.2x31.12 mm

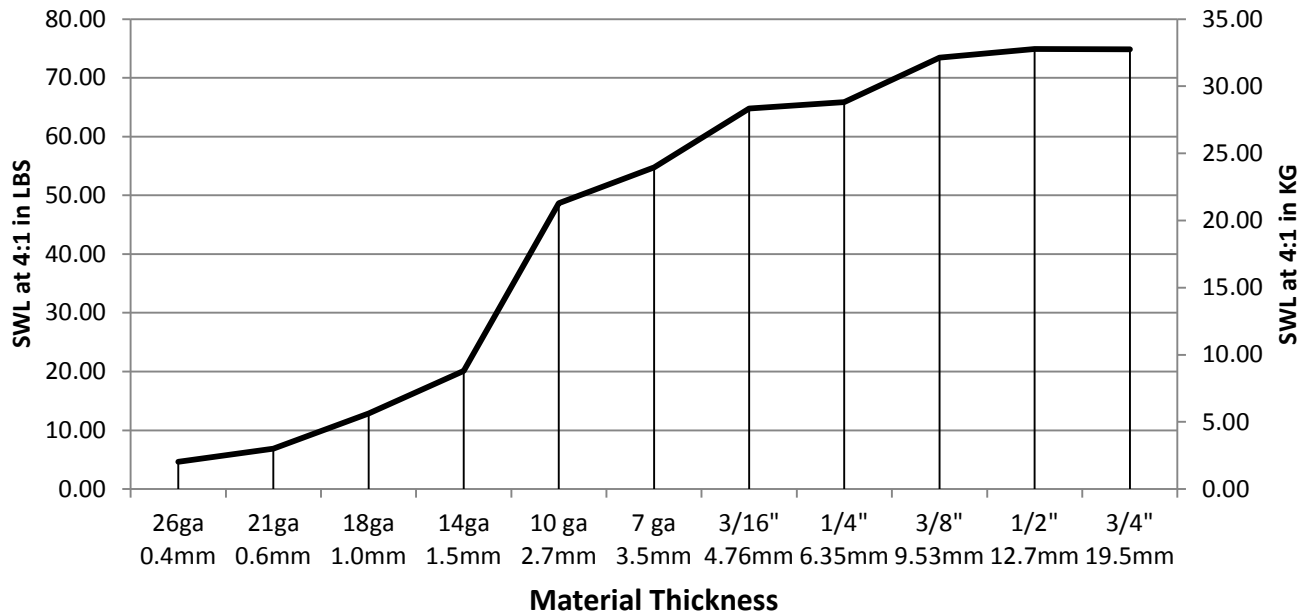


WORKING SURFACE

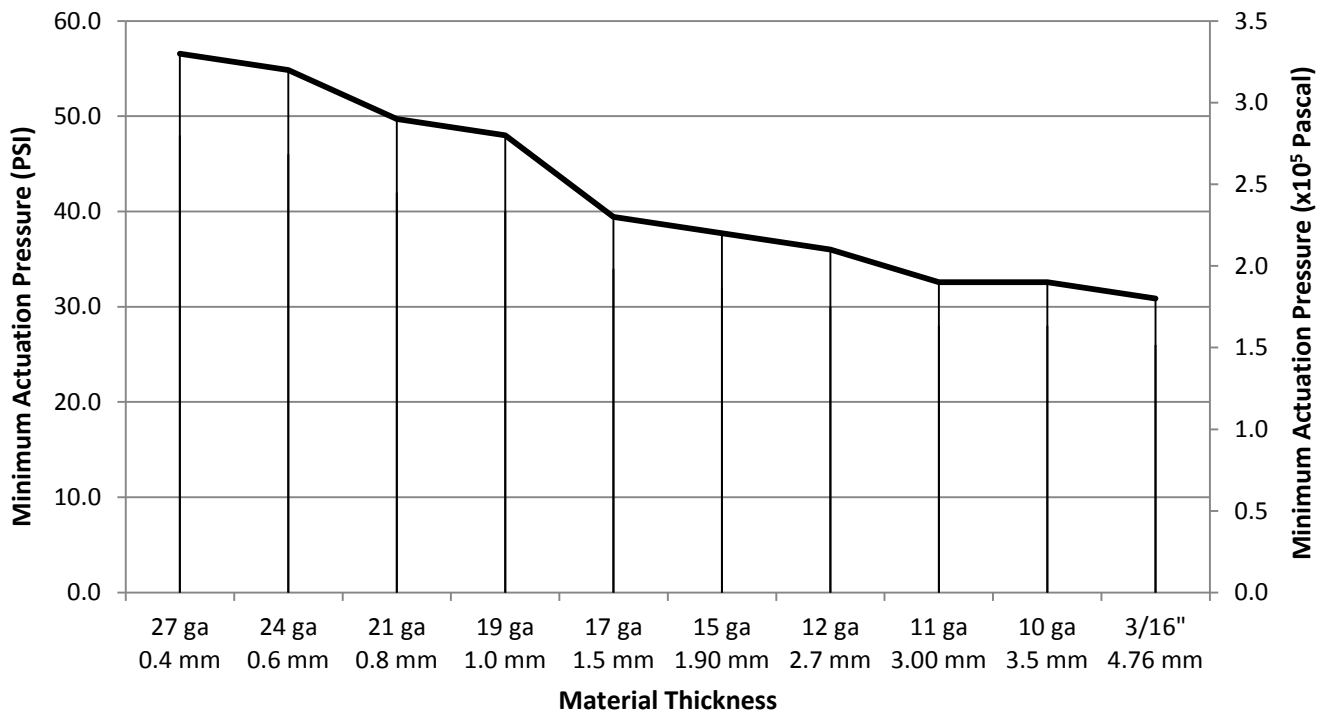
Part Number 110855
Revision Date: March 26, 2014

* Max Breakaway determined in laboratory environment on 2" thick SAE1018 Steel with surface roughness 63 micro inches. Many factors contribute to the actual breakaway force in each application. Always test the magswitch in each application before deployment. Refer to the magswitch information booklet for more information.

Magswitch PLAY20x4 HDC Safe Working Load

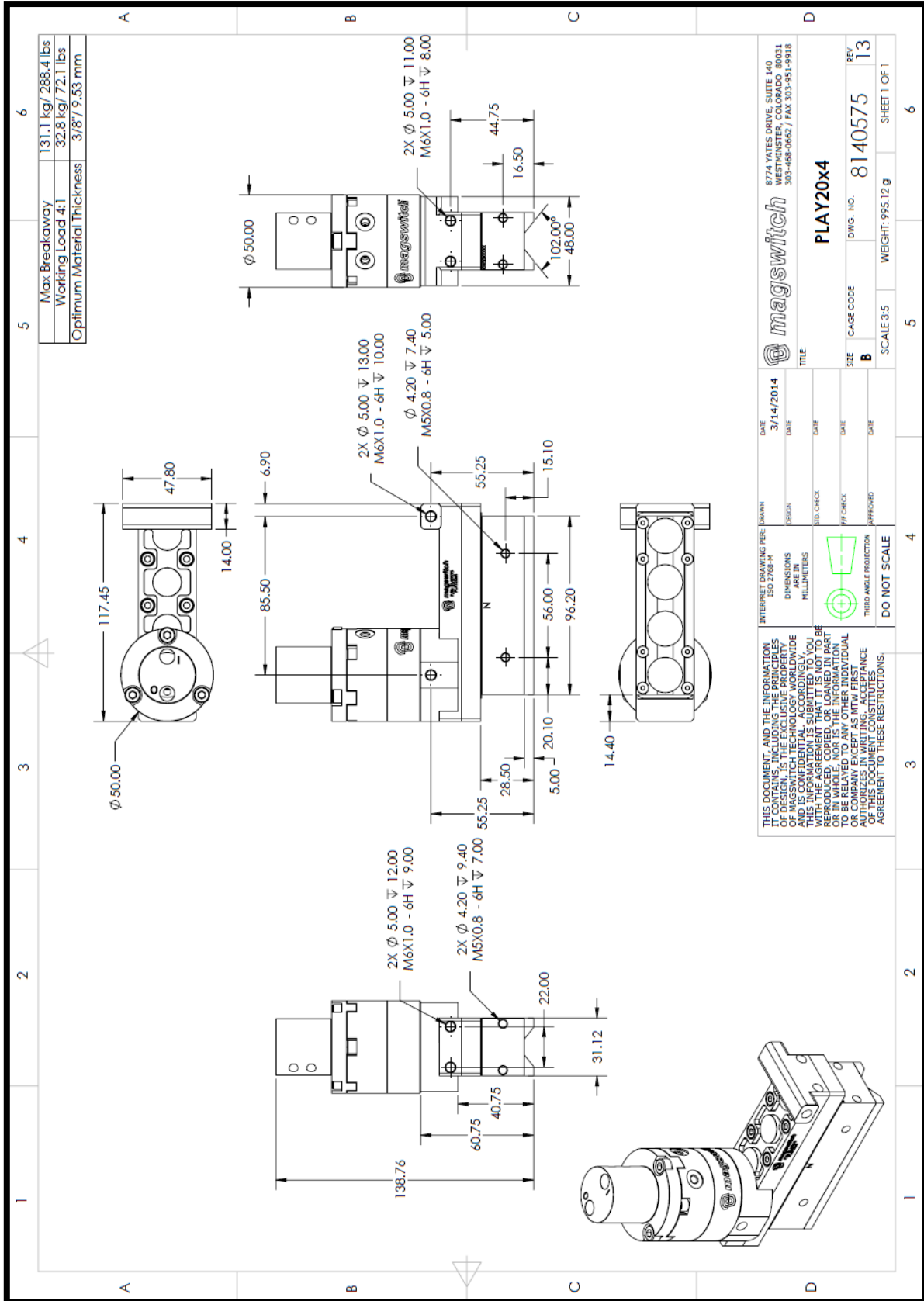


Actuation Vs. Material Thickness



Part Number 110855
 Revision Date: March 26, 2014

* Max Breakaway determined in laboratory environment on 2" thick SAE1018 Steel with surface roughness 63 micro inches. Many factors contribute to the actual breakaway force in each application. Always test the magswitch in each application before deployment. Refer to the magswitch information booklet for more information.



		8774 YATES DRIVE, SUITE 140 303-468-0662 / FAX 303-951-9918	
TITLE: PLAY20x4		DWG. NO. 8140575	REV. 13
DATE: 3/14/2014	DRAWN:	CAGE CODE:	SCALE: 3:5
DIMENSIONS ARE IN MILLIMETERS	REGION:	SIZE: B	WEIGHT: 995.12 g
THIS INFORMATION IS SUBMITTED TO YOU BY THE AGREEMENT OF YOUR PART OR IN WHOLE, NOR IS THE INFORMATION TO BE RELAYED TO ANY OTHER INDIVIDUAL WITHOUT THE WRITTEN ACCEPTANCE OF THIS DOCUMENT CONSTITUTE AN AGREEMENT TO THESE RESTRICTIONS.	DO NOT SCALE	SHEET 1 OF 1	6



Part Number 110855
 Revision Date: March 26, 2014