



Magswitch Technology, Inc.
1355 Horizon Ave
Lafayette, CO 80026
Magswitch.com.au
303-468-0662

Magswitch AR70 Classic

P/N: 8140320

Magswitch “AR” series is explicitly designed for use with pole shoes. Pole shoes must be attached to the unit in order to maximize breakaway force and minimize residual magnetism. Each Magswitch “AR” unit comes equipped with one set of dowelled pole shoes. The “AR” series allows complete customization of pole shapes to provide the best hold on your hard to grip parts.

Note: You may have to design and fabricate custom pole shoes depending on your application for optimal performance.

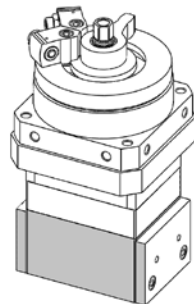
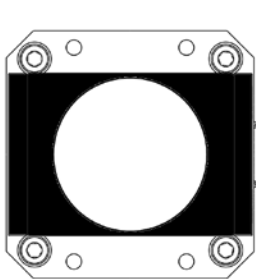


WARNING!
Do Not Operate Unless In
Contact With Ferrous Target

SPECIFICATIONS

P/N: 8140320 - MAGSWITCH AR70 Classic

| | |
|--------------------------------|--------------------------------|
| Max Breakaway* | 960 lbs/435.4 kg |
| Safe Working Load* | 240 lbs/109.1 kg |
| Full Saturation Thickness | 1/2" / 12.7 mm |
| Max Safe Shear* | 125 lbs/56.7 kg |
| Minimum Thickness for De-Stack | 1/2" / 12.7 mm |
| Min Actuation Pressure | 30 psi / 2.1×10^5 pa |
| Max Actuation Pressure | 145 psi / 1.0×10^6 pa |
| Net Weight | 10.6 lbs / 4.8 kg |
| Air Port Thread | G1/8 |
| Mounting Thread | M8x1.25 |
| Overall Height | 210.2 mm |
| Magnetic Pole Footprint | 92x72.3 mm |

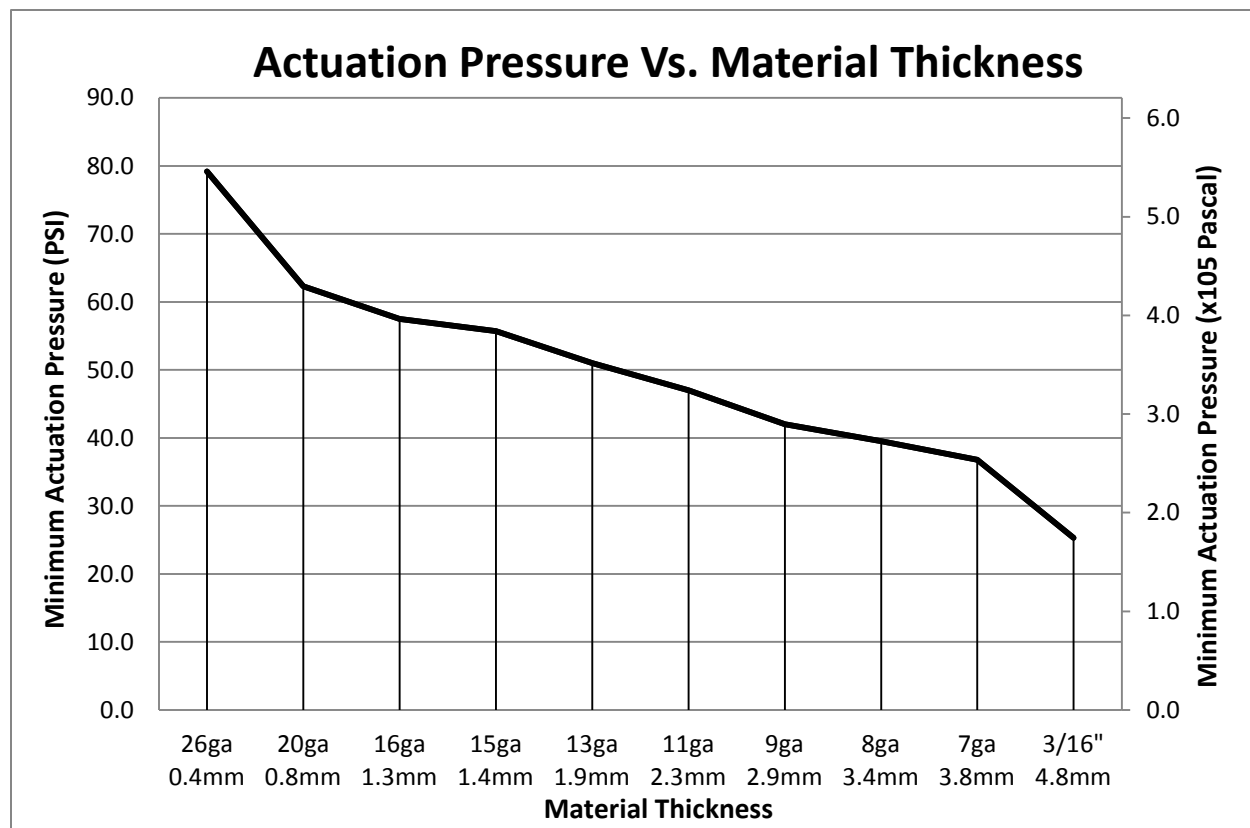
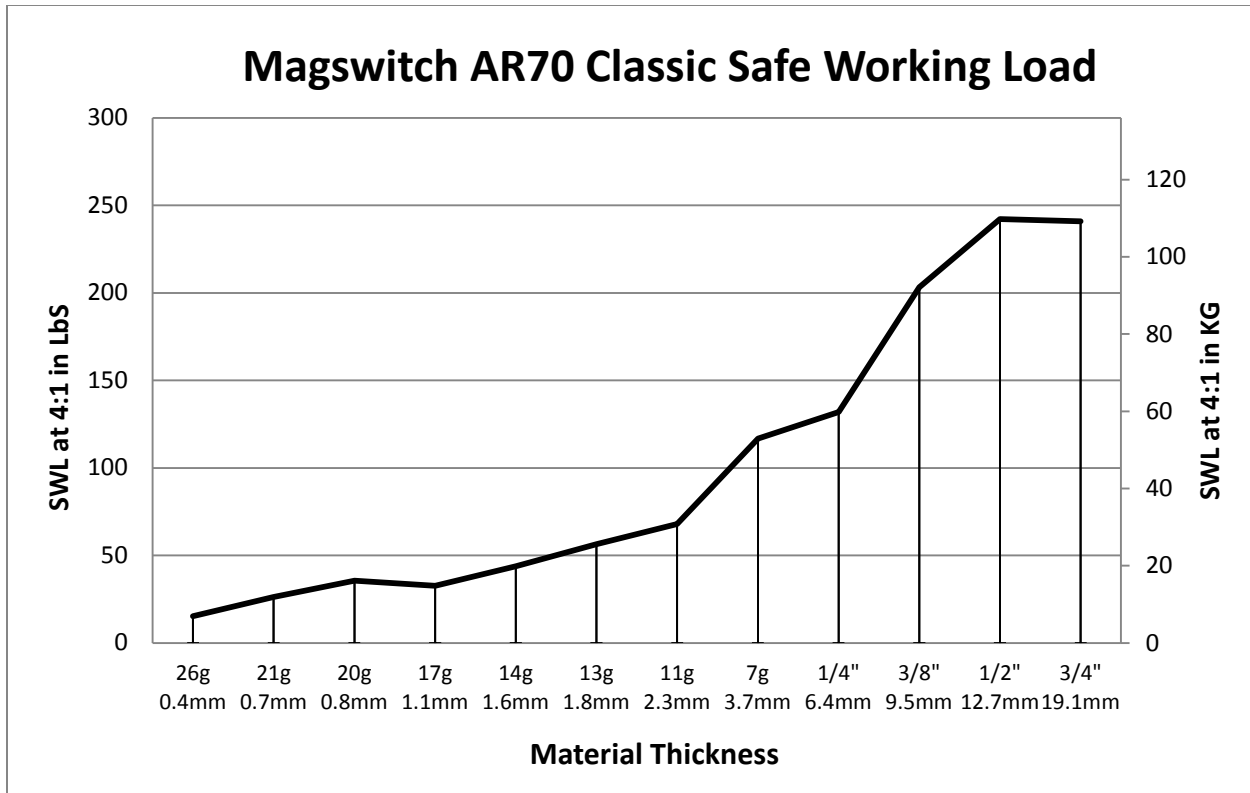


WORKING SURFACE
BLACK=BEST
GRAY=MODERATE

* Max Breakaway determined in laboratory environment on 2" thick SAE1018 Steel with surface roughness 63 micro inches. Many factors contribute to the actual breakaway force in each application. Always test the magswitch in each application before deployment. Refer to the magswitch information booklet for more information.

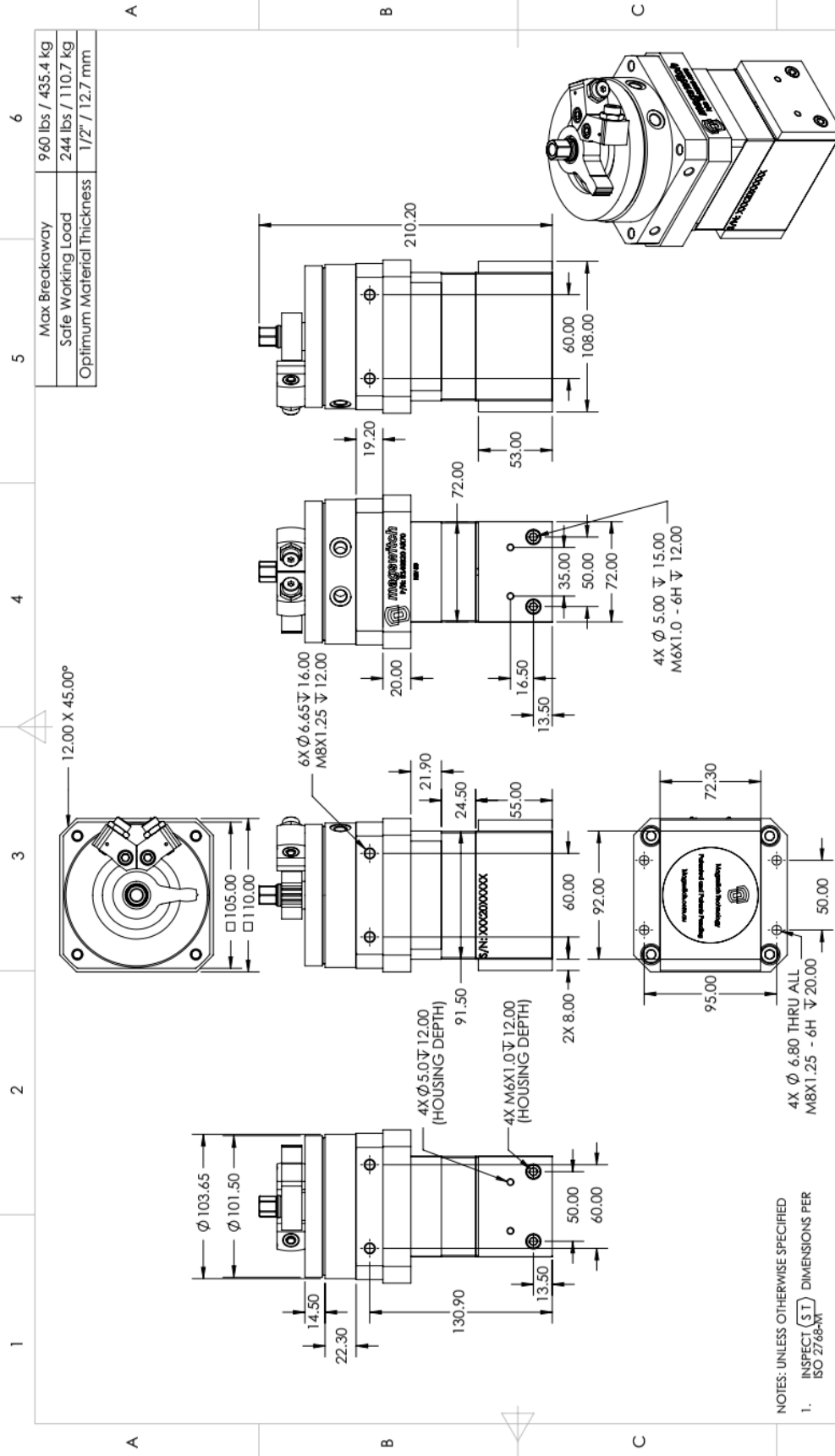


Part Number 110633
Revision Date: 12/15/2016



Part Number 110633
 Revision Date: 12/15/2016

* Max Breakaway determined in laboratory environment on 2" thick SAE1018 Steel with surface roughness 63 micro inches. Many factors contribute to the actual breakaway force in each application. Always test the magswitch in each application before deployment. Refer to the magswitch information booklet for more information.



| | |
|----------------------------|--------------------|
| Max Breakaway | 960 lbs / 435.4 kg |
| Safe Working Load | 244 lbs / 110.7 kg |
| Optimum Material Thickness | 1/2" / 12.7 mm |

- NOTES: UNLESS OTHERWISE SPECIFIED
- INSPECT \sqrt{ST} DIMENSIONS PER ISO 2768-MT
 - 1° DRAFT ALLOWED FOR CASTING
 - REMOVE ALL BURRS AND BREAK SHARP EDGES.
 - IF CAST, TUMBLE DEBUR AFTER CASTING
 - FOR GENERAL DIMENSIONS NOT SPECIFIED SEE 3D CAD DATA
 - SURFACE ROUGHNESS

THIS DOCUMENT AND THE INFORMATION IT CONTAINS, INCLUDING THE PRINCIPLES OF DESIGN, IS THE EXCLUSIVE PROPERTY OF MAGSWITCH AND IS CONSIDERED UNCLASSIFIED AND IS NOT TO BE RELEASED OR DISCLOSED TO ANY OTHER INDIVIDUAL OR COMPANY EXCEPT AS SET FORTH IN THIS DOCUMENT CONSTITUTE AN AGREEMENT TO THESE RESTRICTIONS.

INTERNET DRAWING FILE: ISO 2768-M

DATE: 12/15/2016

DESIGN: John Fisher

3D CHECK: _____

OFF CHECK: _____

APPROVED: _____

DATE: _____

DATE: _____

DATE: _____

DATE: _____

DATE: _____

THIRD ANGLE PREDICTION

DO NOT SCALE

magswitch

AR70 Classic

CAGE CODE: _____

DWG. NO.: 8000320

REV: 09

SCALE: 2:5

WEIGHT: 5150.90 g

SHEET 1 OF 1



Part Number 110633
Revision Date: 12/15/2016