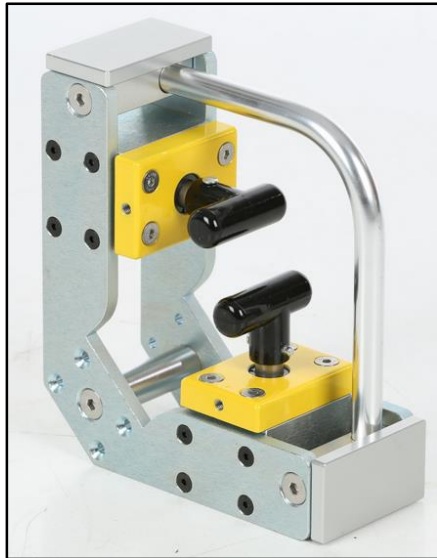




Magswitch Technology, Inc.  
 1355 Horizon Ave.  
 Lafayette, CO 80026  
 Magswitch.com.au  
 303-468-0662

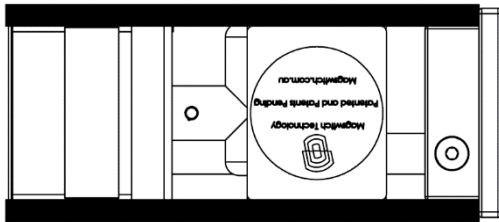
# Magswitch 50mm 90 Degree Angle Stiffener Tool P/N: 8100961

Magswitch 90 degree Angle Stiffeners are one of the most compact, powerful, and versatile welding tools in the market. Featuring the benefits of Magswitch including incredible power and precision control, the Magswitch 90 degree angle stiffeners are easy to use, and can be used with larger and heavier steel. The side plate design allows the Magswitch 90 degree angle stiffeners to be used with various steel plate thicknesses of various sizes. The extra magnet mounting location at the corner allows to modify the location of the magnets to optimize holding for the desired application. A handle rod and end plates allow for ease of handling and positioning.



**WARNING!**  
**Do Not Operate Unless In  
 Contact With Ferrous Target**

SPECIFICATIONS (Two 50mm Magnets)	
<b>P/N: 8100961 - MAGSWITCH 50mm 90 Degree Angle Stiffener Tool</b>	
Max Holding Force*	1200 lbs / 545.5 kg
Full Saturation Thickness	0.5 in / 12.7 mm
2:1 Shear Working Load*	120 lbs / 54.5 kg
Net Weight	9.9 lbs / 4.5 kg
Overall Height	183 mm
Magnetic Pole Footprint	80 mm x 141 mm; 80 mm x 166 mm



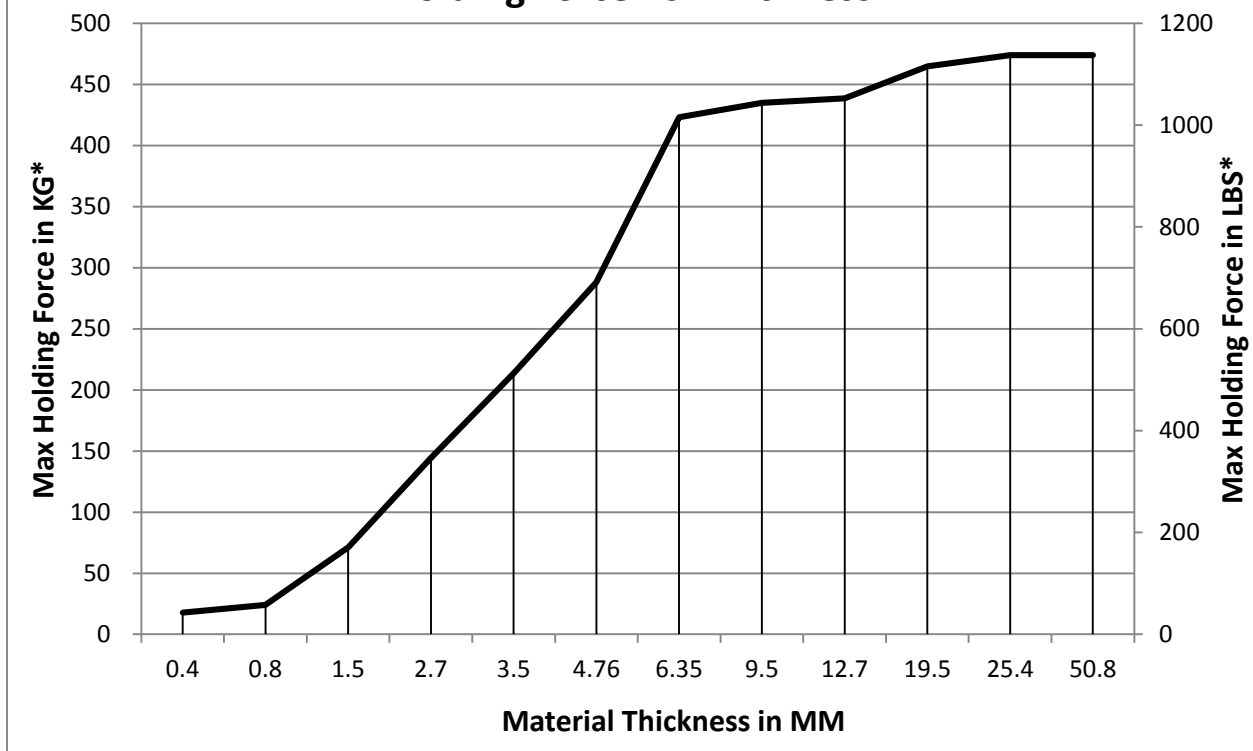
**BLACK=WORKING SURFACE**



Part Number 1101174  
 Revision Date: Aug 24, 2015

\* Max Holding Force determined in laboratory environment on 2" thick SAE1018 Steel with surface roughness 63 micro inches. Many factors contribute to the actual breakaway force in each application. Always test the magswitch in each application before deployment. Refer to the magswitch information booklet for more information.

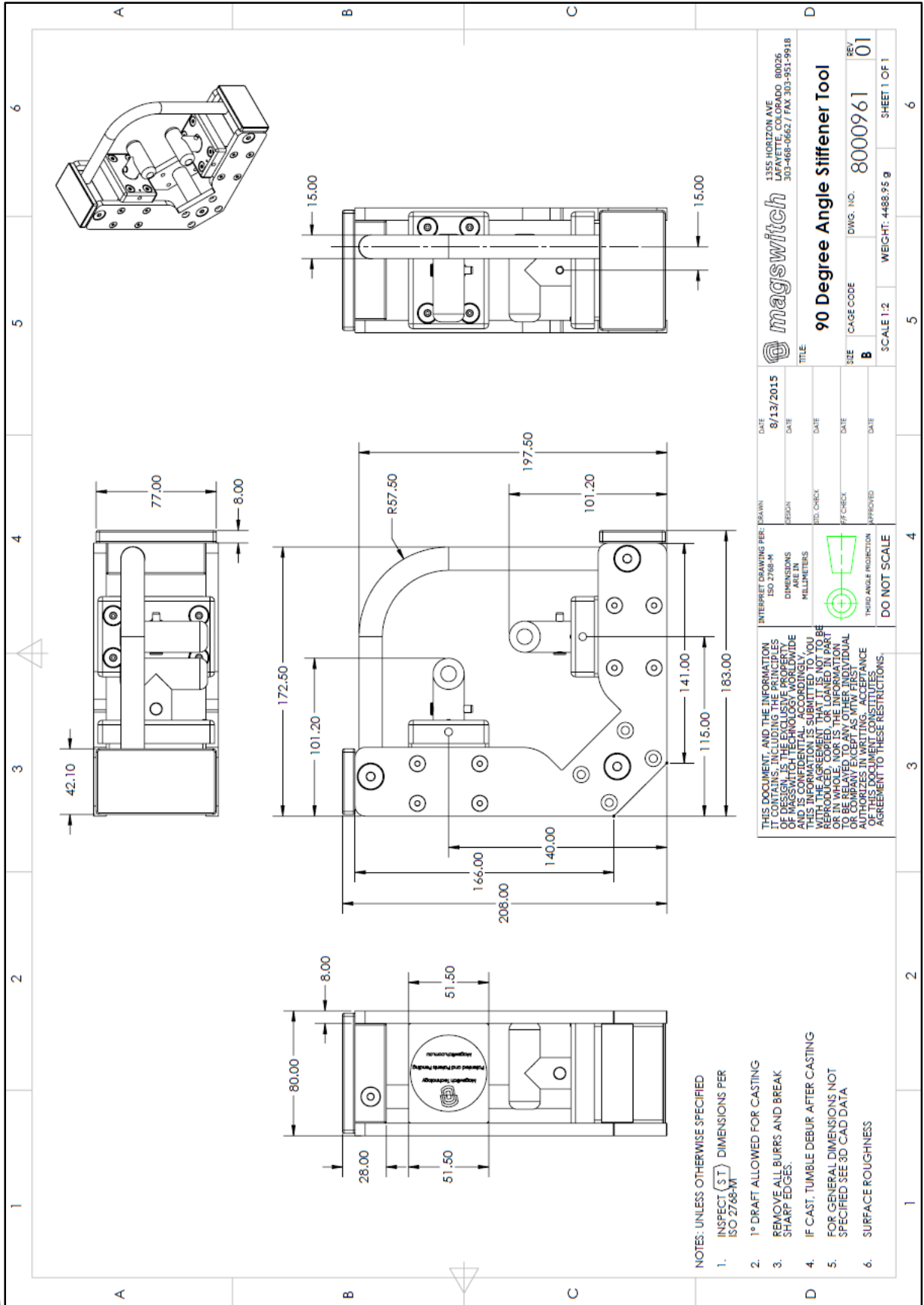
### Magswitch 50mm 90 Degree Angle Stiffener Holding Force Vs. Thickness



**NOTE:** Depicted maximum holding force data reflects force of both magnets



Part Number 1101174  
Revision Date: Aug 24, 2015



- NOTES: UNLESS OTHERWISE SPECIFIED
1. INSPECT (S T) DIMENSIONS PER ISO 2768-M
  2. 1° DRAFT ALLOWED FOR CASTING
  3. REMOVE ALL BURRS AND BREAK SHARP EDGES.
  4. IF CAST, TUMBLE DEBUR AFTER CASTING
  5. FOR GENERAL DIMENSIONS NOT SPECIFIED SEE 3D CAD DATA
  6. SURFACE ROUGHNESS

DATE: 8/13/2015		DATE: _____		DATE: _____		DATE: _____		DATE: _____	
DESIGNER: _____		CHECKER: _____		APPROVER: _____		DATE: _____		DATE: _____	
DIMENSIONS ARE IN MILLIMETERS		THIRD ANGLE PROJECTION		DO NOT SCALE		SCALE: 1:2		WEIGHT: 4488.95 g	
THIS DOCUMENT AND THE INFORMATION CONTAINED HEREIN IS THE EXCLUSIVE PROPERTY OF MAGSWITCH TECHNOLOGY, WORLDWIDE. THIS INFORMATION IS SUBMITTED TO YOU WITH THE AGREEMENT THAT IT IS NOT TO BE REPRODUCED, COPIED, OR LOANED IN PART OR IN WHOLE TO ANY OTHER INDIVIDUAL OR COMPANY EXCEPT AS FIRST AUTHORIZED IN WRITING. ACCEPTANCE OF THIS DOCUMENT CONSTITUTES YOUR AGREEMENT TO THESE RESTRICTIONS.		MAGSWITCH TECHNOLOGY		1355 HORIZON AVE LAFAYETTE, COLORADO 80026 303-468-0862 / FAX 303-951-9918		TITLE: 90 Degree Angle Stiffener Tool		REV: 01	
CAGE CODE: _____		DWG. NO.: 8000961		SHEET 1 OF 1		SCALE: 1:2		WEIGHT: 4488.95 g	



Part Number 1101174  
Revision Date: Aug 24, 2015