



Magswitch Technology, Inc.
 1355 Horizon Ave.
 Lafayette, CO 80026
 Magswitch.com.au
 303-468-0662

Magswitch MagPress

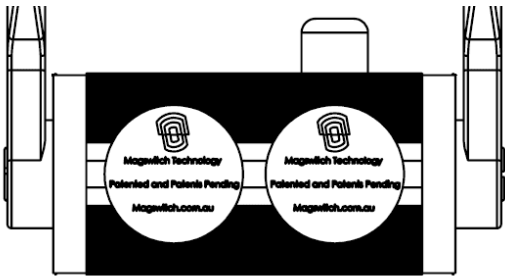
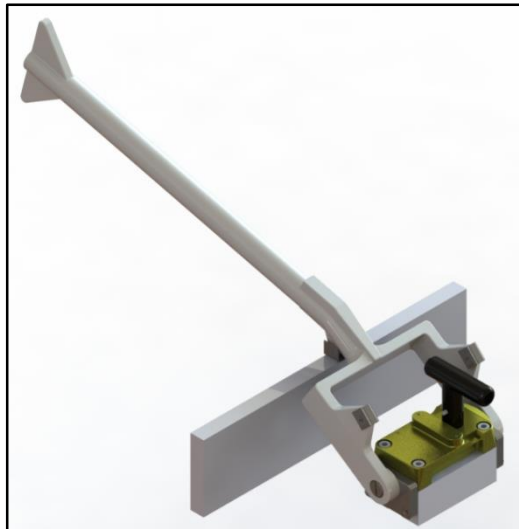
P/N: 8100935

The Magswitch MagPress offers a simple way to align sheets and press beam. Ask any welder how long it takes to align large sheets with precision. Magswitch offers a solution that yields incredible time savings. The MagPress features 1100 lbs (500kg) of hold force instantly! Using magnetic force and leverage, the tool aligns the sheets! This allows for an individual to align two sheets and weld the two sheets together much quicker than other methods. By turning the handle to the other side, this tool becomes a beam press tool which can press 4-6" beam in a second! This product gives you two functions in one simple tool.



WARNING!
Do Not Operate Unless In
Contact With Ferrous Target

SPECIFICATIONS	
P/N: 8100935 - MAGSWITCH MagPress	
Max Breakaway*	1100 lbs/500 kg
Full Saturation Thickness	1/2" / 12.7mm
Max Safe Shear*	200 lbs/90.9 kg
Minimum Thickness for De-Stack	1/2" / 12.7mm
Net Weight	13.1 lbs/6.0 kg
Overall Height	414.11 mm
Magnetic Pole Footprint	119.0 x 71.12 mm



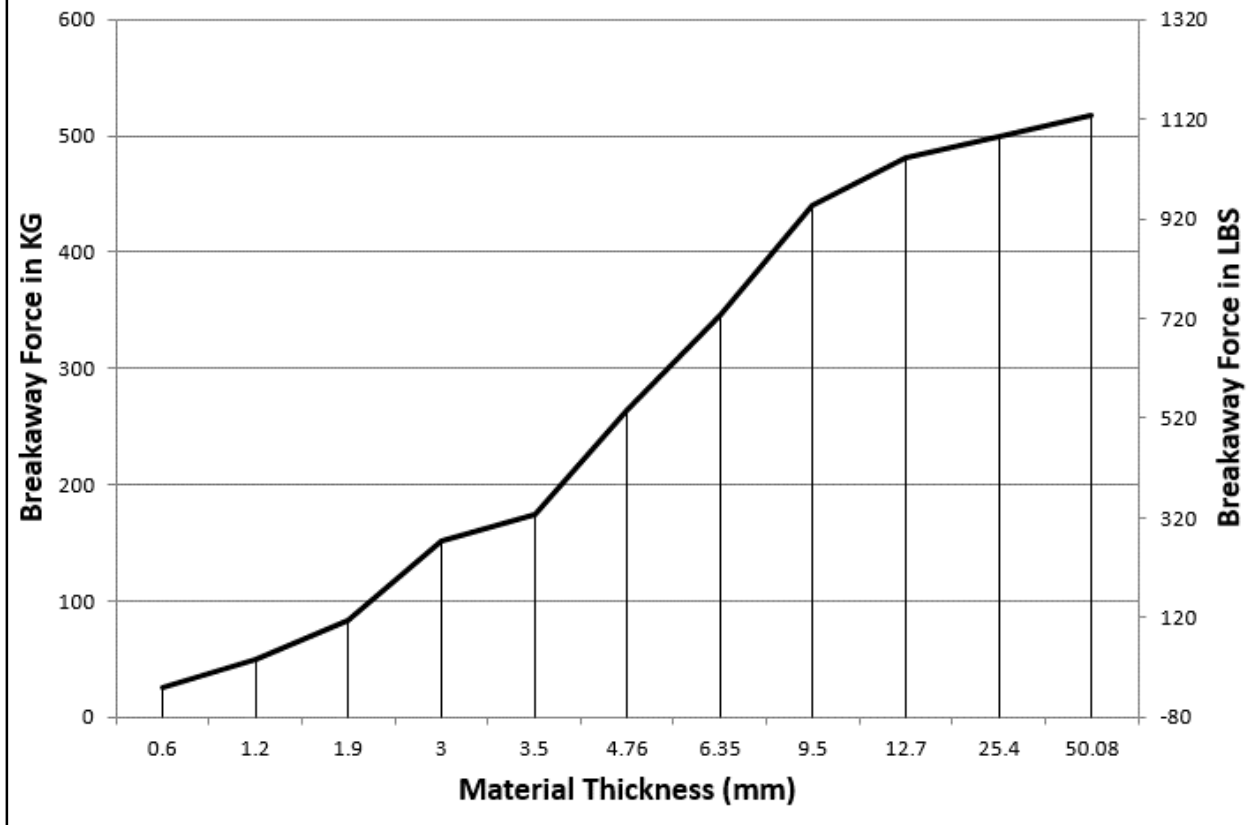
BLACK=WORKING SURFACE



Part Number 1101145
 Revision Date: Aug 21, 2015

* Max Breakaway determined in laboratory environment on 2" thick SAE1018 Steel with surface roughness 63 micro inches. Many factors contribute to the actual breakaway force in each application. Always test the magswitch in each application before deployment. Refer to the magswitch information booklet for more information.

Magswitch MagPress (600x2) Breakaway Chart

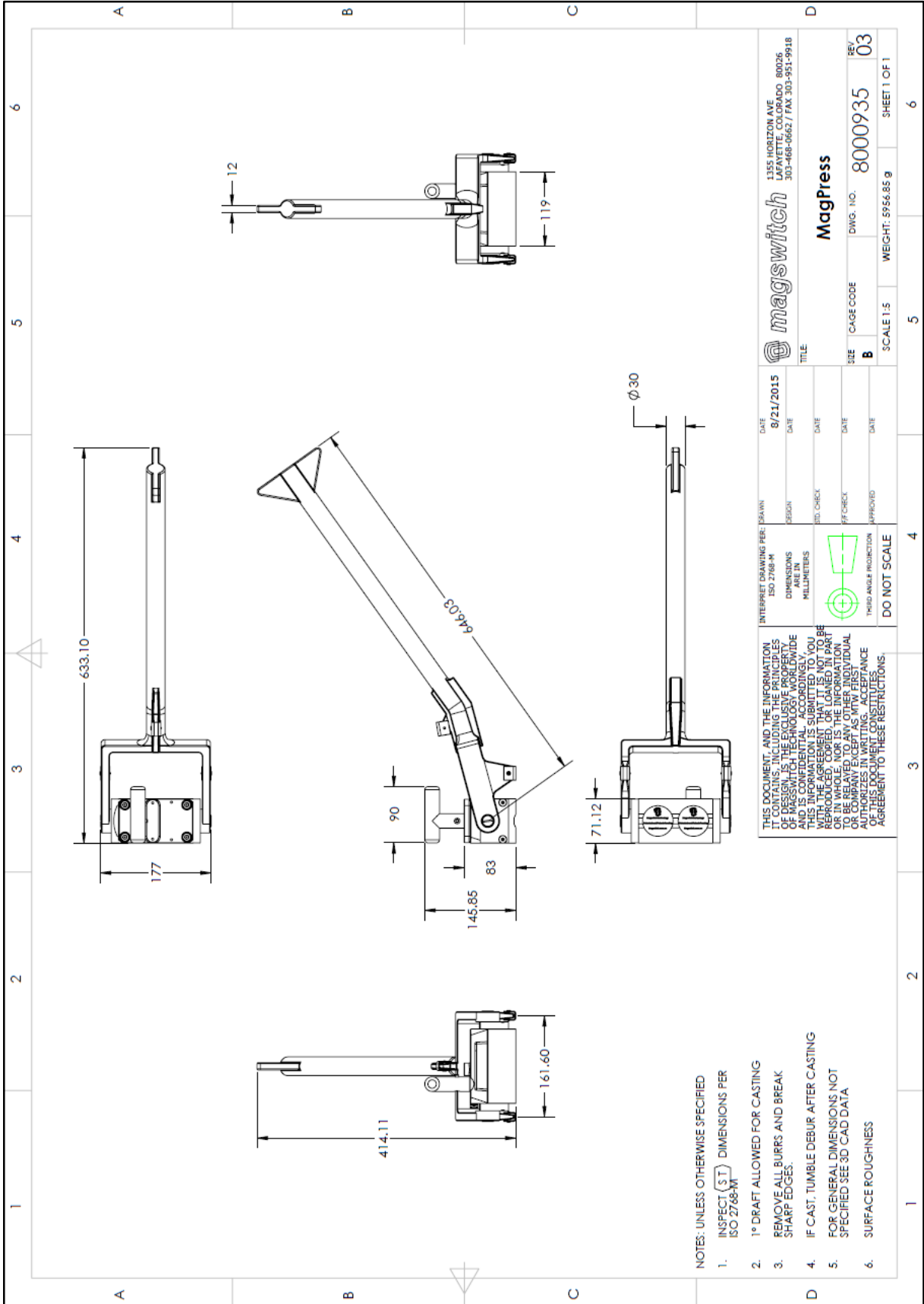


Part Number 1101145
Revision Date: Aug 21, 2015

* Max Breakaway determined in laboratory environment on 2" thick SAE1018 Steel with surface roughness 63 micro inches. Many factors contribute to the actual breakaway force in each application. Always test the magswitch in each application before deployment. Refer to the magswitch information booklet for more information.



Part Number 1101145
 Revision Date: Aug 21, 2015



- NOTES: UNLESS OTHERWISE SPECIFIED
1. INSPECT (S.T.) DIMENSIONS PER ISO 2768-MT
 2. 1° DRAFT ALLOWED FOR CASTING
 3. REMOVE ALL BURRS AND BREAK SHARP EDGES.
 4. IF CAST, TUMBLE DEBUR AFTER CASTING
 5. FOR GENERAL DIMENSIONS NOT SPECIFIED SEE 3D CAD DATA
 6. SURFACE ROUGHNESS

THIS DOCUMENT, AND THE INFORMATION CONTAINED HEREIN, IS THE EXCLUSIVE PROPERTY OF MAGSWITCH TECHNOLOGY WORLDWIDE AND IS CONFIDENTIAL ACCORDINGLY YOU WITH THE AGREEMENT THAT IT IS NOT TO BE REPRODUCED, COPIED, OR LOANED IN PART OR IN WHOLE, NOR IS THE INFORMATION OR COMPANY EXCEPT AS MTW FIRST AUTHORIZES IN WRITING. ACCEPTANCE OF THIS DOCUMENT CONSTITUTES AGREEMENT TO THESE RESTRICTIONS.		INTERPRET DRAWING PER: ISO 2768-M DIMENSIONS ARE IN MILLIMETERS THIRD ANGLE PROJECTION DO NOT SCALE	DATE: 8/21/2015 DESIGN: [] STD. CHECK: [] P/F CHECK: [] APPROVED: []	1355 HORIZON AVE LAFAYETTE, COLORADO 80026 303-468-0662 / FAX 303-951-9918 magswitch MagPress	SIZE: B CAGE CODE: [] DWG. NO.: 8000935 SCALE: 1:5 WEIGHT: 595685 g SHEET 1 OF 1
---	--	--	--	---	--