



Magswitch Technology, Inc.
 1355 Horizon Ave
 Lafayette, CO 80026
 Magswitch.com.au
 303-468-0662

Magswitch MLAY1000x6

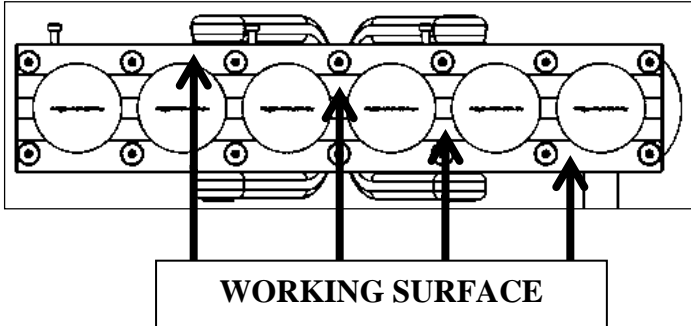
P/N: 8100482

Magswitch LAY series magnets utilize different size magnets to attain different field depths. This allows for greater working loads and increased control over larger work pieces. The MLAY1000x6 is a lightweight heavy lifting magnet ideal for lifting large thick sheets, beams, pipe, and performs well on air gaps such as rust and dirt. It features a unique dual swivel hook design for both load stability and lifting from horizontal to vertical. With customizable pole shoes to fit almost any application, the LAY is a great all around tool that is perfect for picking pipe and round as well as large plate steel.



WARNING!
Do Not Operate Unless In Contact With Ferrous Target

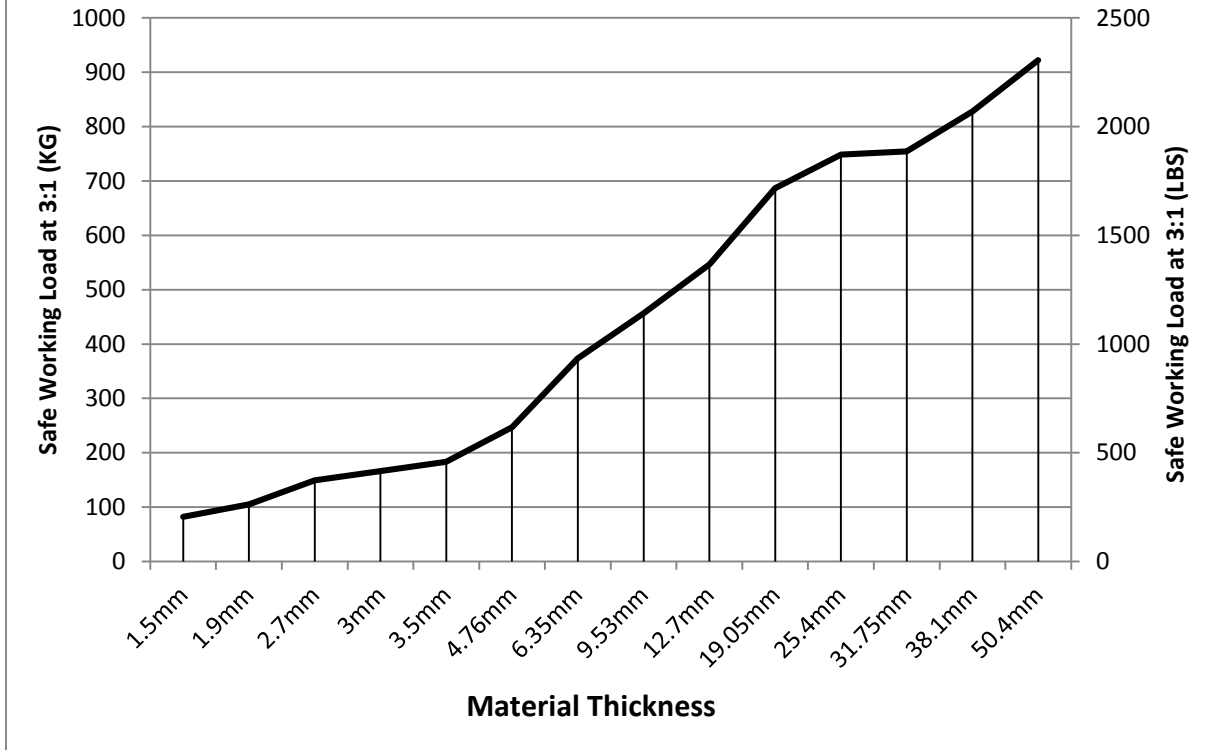
SPECIFICATIONS	
P/N: 8100482 - MAGSWITCH MLAY1000x6	
Max Breakaway*	6088 lbs/2767 kg
Safe Working Load*	2029 lbs/922 kg
Full Saturation Thickness	1" / 25.4mm
Max Safe Shear*	617 lbs/280.4 kg
Minimum Thickness for De-Stack	1" / 25.4mm
Net Weight	60.0 lbs/27.2 kg
Mounting Thread	M8x1.25
Overall Height	253.3 mm
Magnetic Pole Footprint	492.75x97.6 mm



Part Number 110685
 Revision Date: Nov 24, 2015

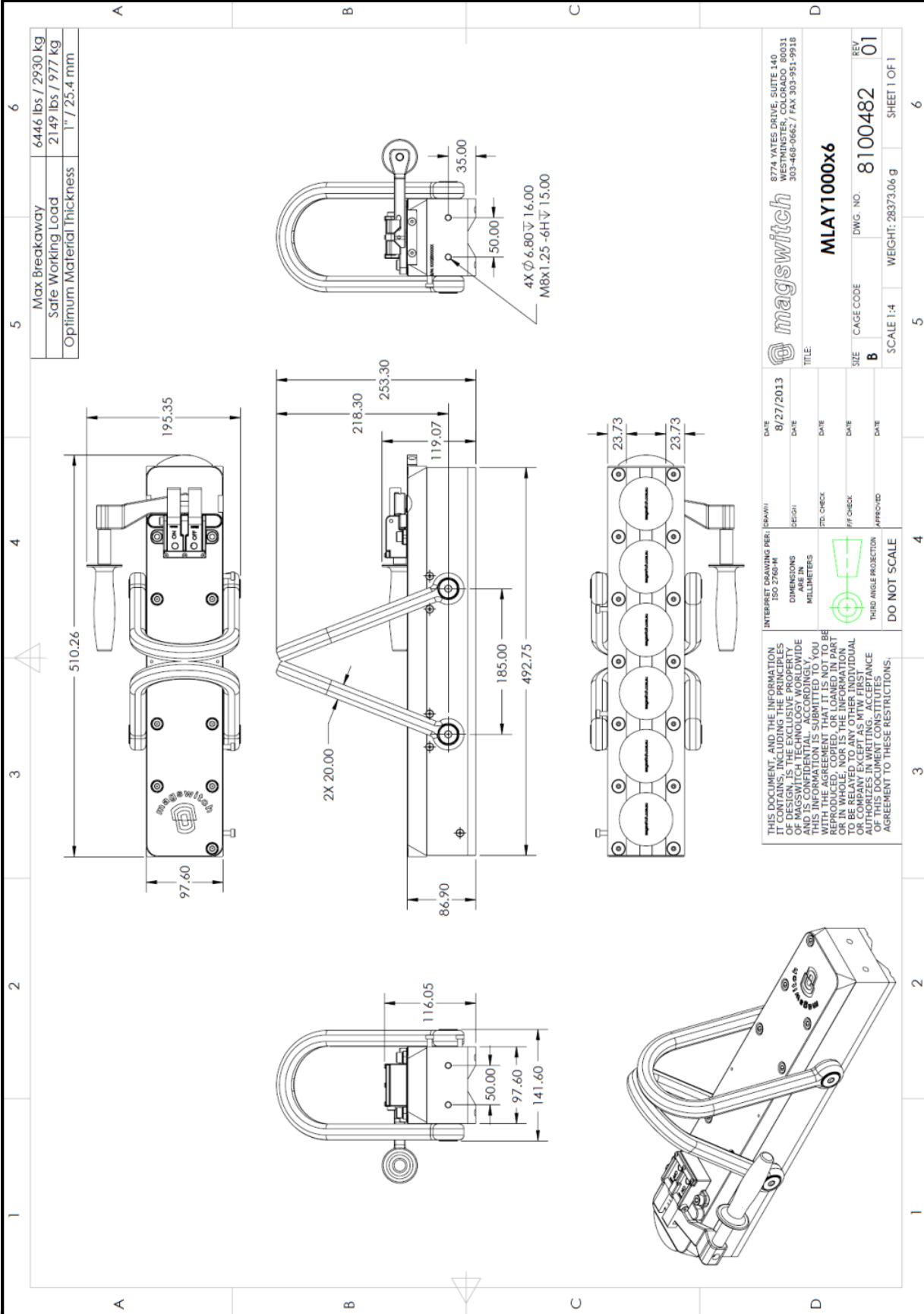
* Max Breakaway determined in laboratory environment on 2" thick SAE1018 Steel with surface roughness 63 micro inches. Many factors contribute to the actual breakaway force in each application. Always test the magswitch in each application before deployment. Refer to the magswitch information booklet for more information.

Magswitch MLAY1000x6 Safe Working Load



Part Number 110685
Revision Date: Nov 24, 2015

* Max Breakaway determined in laboratory environment on 2" thick SAE1018 Steel with surface roughness 63 micro inches. Many factors contribute to the actual breakaway force in each application. Always test the magswitch in each application before deployment. Refer to the magswitch information booklet for more information.



magswitch		8774 YATES DRIVE SUITE 140 WESTMINSTER, COLORADO 80031 303-468-0662 / FAX 303-951-9918	
TITLE: MLAY1000x6		CAGE CODE: 8100482	REV: 01
SIZE: B	DWG. NO. 8100482	WEIGHT: 28373.06 g	
SCALE 1:4		SHEET 1 OF 1	

INTERPRET DRAWING PER: DW/WH	DATE: 8/27/2013	DESIGN	DATE
DIMENSIONS ARE IN MILLIMETERS	DATE	STD. CHECK	DATE
THIRD ANGLE PROJECTION	DATE	OFF CHECK	DATE
DO NOT SCALE	DATE	APPROVED	DATE

THIS DOCUMENT, AND THE INFORMATION IT CONTAINS, INCLUDING THE PRINCIPLES OF DESIGN, IS THE EXCLUSIVE PROPERTY OF MAGSWITCH. IT IS NOT TO BE REPRODUCED, COPIED, OR LOANED IN PART OR IN WHOLE, NOR IS THE INFORMATION TO BE RELATED TO ANY OTHER INDIVIDUAL OR ENTITY WITHOUT THE WRITTEN AUTHORIZATION OF MAGSWITCH. ACCEPTANCE OF THIS DOCUMENT CONSTITUTES AGREEMENT TO THESE RESTRICTIONS.



Part Number 110685
Revision Date: Nov 24, 2015