



Magswitch Technology, Inc.
8774 Yates Dr. Suite 140
Westminster, CO 80031
Magswitch.com.au
303-468-0662

Magswitch Hand Lifter 60-M (Manual)

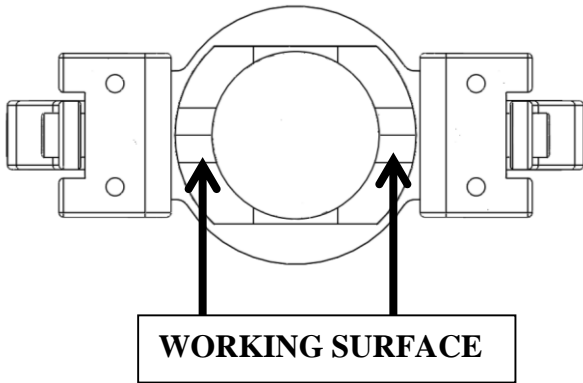
P/N: 8100359

The Magswitch Manual Hand Lifter 60-M adds safety and convenience to every workstation. The Magswitch Manual Hand Lifter 60-M lets you pick, place, slide, and reposition steel without using your fingers. No need to touch hot, sharp, or dirty steel. Ideal for small steel handling, dragging sheet, picking, placing and pulling parts out of burn table or handling scrap.



WARNING!
Do Not Operate Unless In Contact With Ferrous Target

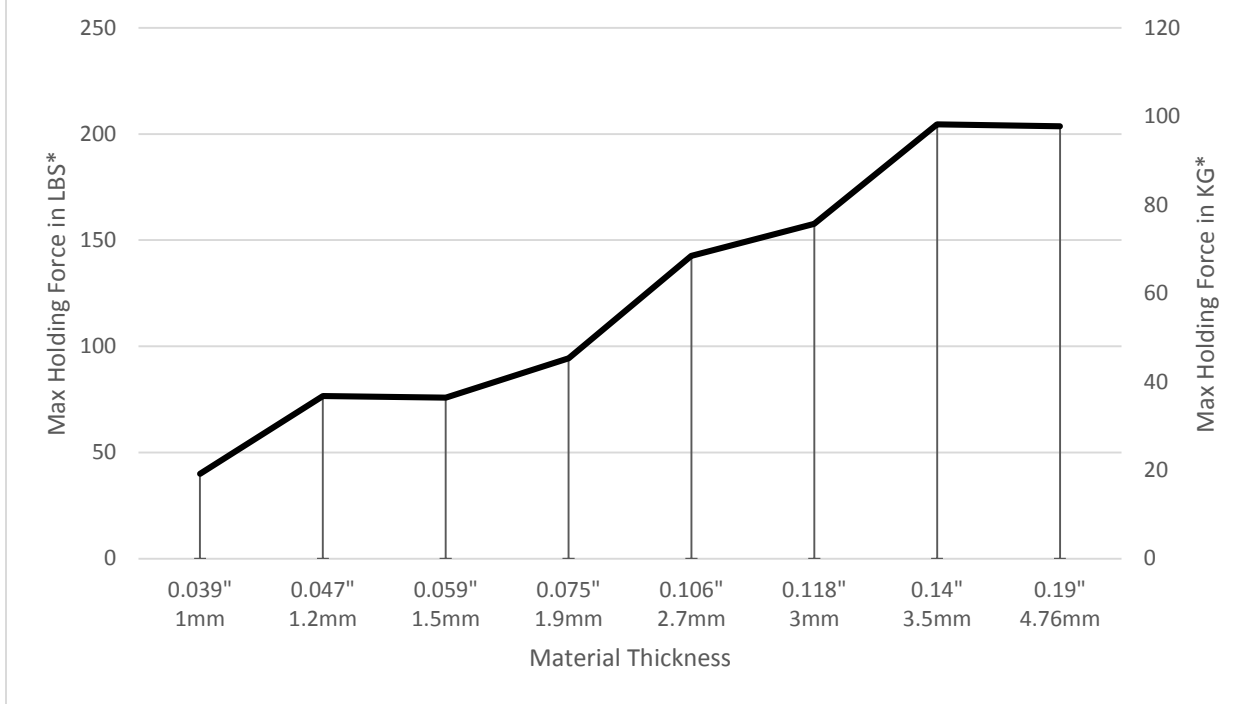
SPECIFICATIONS	
P/N: 8100359 - MAGSWITCH Hand Lifter 60-M (Manual)	
Max Breakaway*	235 lbs/106 kg
Full Saturation Thickness	0.25" / 6 mm
2:1 Shear Working Load*	45 lbs/20 kg
Net Weight	1.3 lbs/0.6 kg
Overall Height	140 mm
Magnetic Pole Footprint	56mm x 41.25mm



* Max Breakaway determined in laboratory environment on 2" thick SAE1018 Steel with surface roughness 63 micro inches. Many factors contribute to the actual breakaway force in each application. Always test the magswitch in each application before deployment. Refer to the magswitch information booklet for more information.

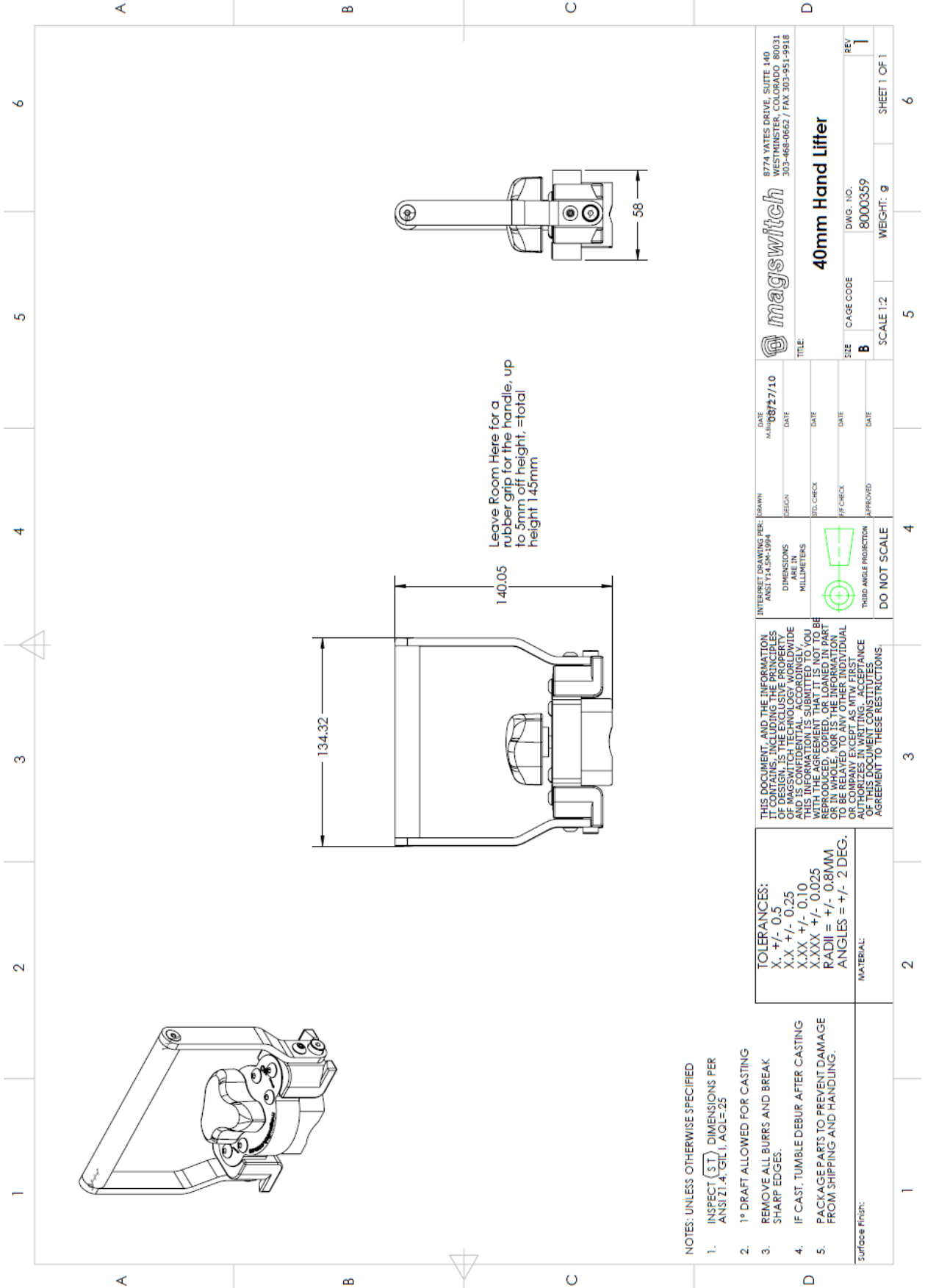


Magswitch MagJig 235 Breakaway Data vs. Thickness





Part Number 110692
 Revision Date: June 26, 2012



- NOTES: UNLESS OTHERWISE SPECIFIED
- INSPECT (S1) DIMENSIONS PER ANSI Z39.4, GIL I, AG1-E-25
 - 1° DRAFT ALLOWED FOR CASTING
 - REMOVE ALL BURRS AND BREAK SHARP EDGES.
 - IF CAST, TUMBLE DEBUR AFTER CASTING
 - PACKAGE PARTS TO PREVENT DAMAGE FROM SHIPPING AND HANDLING.

TOLERANCES:
 X. +/- 0.5
 X.X +/- 0.25
 X.XX +/- 0.10
 X.XXX +/- 0.025
 RADI = +/- 0.8MM
 ANGLES = +/- 2 DEG.

MATERIAL:

THIS DOCUMENT, AND THE INFORMATION IT CONTAINS, INCLUDING THE PRINCIPLES OF MAGSWITCH TECHNOLOGY, IS UNCLASSIFIED AND IS CONFIDENTIAL. ACCORDINGLY, THIS INFORMATION IS SUBMITTED TO YOU FOR REVIEW ONLY. IT IS NOT TO BE REPRODUCED, COPIED, OR LOANED IN PART OR IN WHOLE, NOR IS THE INFORMATION TO BE RELAYED TO ANY OTHER INDIVIDUAL WITHOUT THE WRITTEN ACCEPTANCE OF THIS DOCUMENT CONSTITUTES AGREEMENT TO THESE RESTRICTIONS.

INTERPRET DRAWING PER: ANSI Y14.3M-1994
 DIMENSIONS ARE IN MILLIMETERS
 THIRD ANGLE PROJECTION
 DO NOT SCALE

DATE: 08/27/10
 DRAWN: [Signature]
 DESIGN: [Signature]
 BRD. CHECK: [Signature]
 P/F CHECK: [Signature]
 APPROVED: [Signature]

DATE: 08/27/10
 DRAWN: [Signature]
 DESIGN: [Signature]
 BRD. CHECK: [Signature]
 P/F CHECK: [Signature]
 APPROVED: [Signature]

8774 YATES DRIVE, SUITE 140
 WESTMINSTER, COLORADO 80031
 303-468-0662 / FAX 303-951-9918

magswitch

40mm Hand Lifter

SIZE: B CAGE CODE: 8000359
 SCALE: 1:2 WEIGHT: g
 SHEET 1 OF 1