



Magswitch Technology, Inc.
 1355 Horizon Ave.
 Lafayette, CO 80026
 Magswitch.com.au
 303-468-0662

Magswitch MLAY600

P/N: 8100089

Magswitch LAY series magnets utilize different size magnets to attain different field depths. The MLAY600 series utilizes 50mm magnets to achieve full saturation at 1/2 inch and greater. The MLAY600 is a light duty lifting magnet ideal for fitting in tight spots and lifting thin sheet. Light weight and compact size make the MLAY600 perfect for small and medium lifting jobs.

WARNING!
Do Not Operate Unless In Contact With Ferrous Target

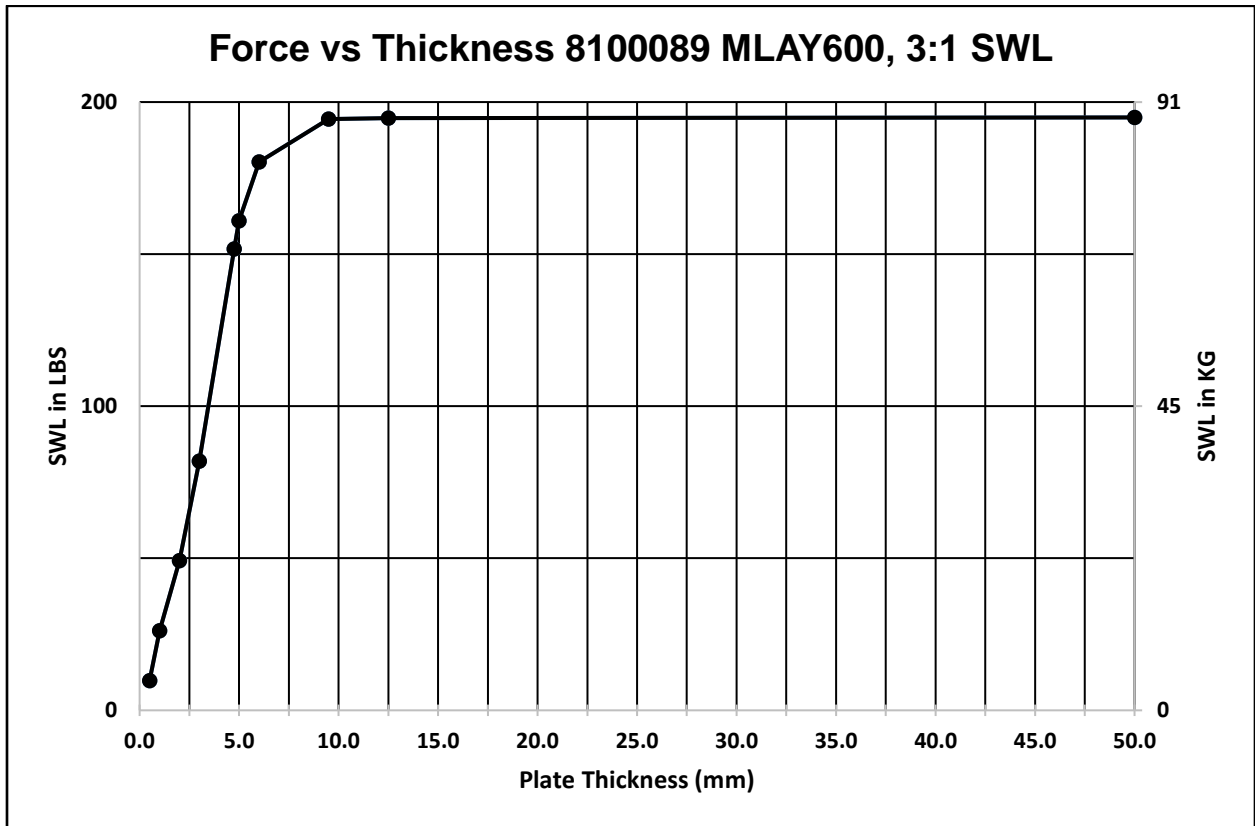


WORKING SURFACE
BLACK = BEST
GRAY = MODERATE

SPECIFICATIONS	
P/N: 8100089 - MAGSWITCH MLAY600	
Max Breakaway*	584 lbs/265 kg
Safe Working Load*	194 lbs/88 kg
Full Saturation Thickness	1/2" / 12.7mm
Max Safe Shear*	70 lbs/31.8 kg
Minimum Thickness for De-Stack	1/2" / 9.5mm
Net Weight	4.4 lbs/2.0 kg
Overall Height	184.0 mm
Magnetic Pole Footprint	75.0 x 51.5 mm

* Max Breakaway determined in laboratory environment on 2" thick SAE1018 Steel with surface roughness 63 micro inches. Many factors contribute to the actual breakaway force in each application. Always test the magswitch in each application before deployment. Refer to the magswitch information booklet for more information.





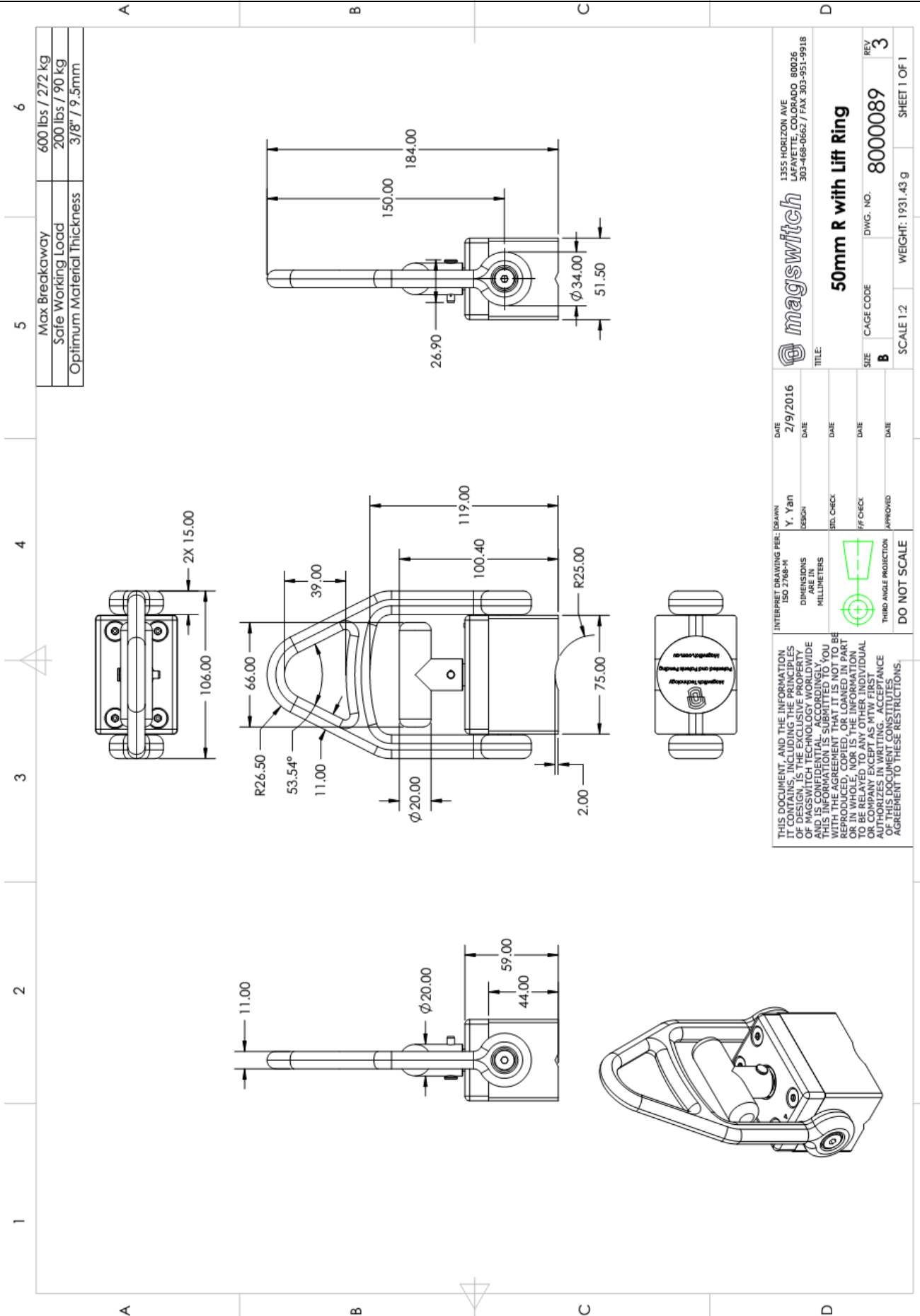
* Max Breakaway determined in laboratory environment on 2" thick SAE1018 Steel with surface roughness 63 micro inches. Many factors contribute to the actual breakaway force in each application. Always test the magswitch in each application before deployment. Refer to the magswitch information booklet for more information.



Part Number 110690
 Revision Date: May 18, 2017



Part Number 110690
Revision Date: May 18, 2017



1355 HORIZON AVE LAFAYETTE, COLORADO 80026 303-468-0662 / FAX 303-951-9918		DATE	2/9/2016
50mm R with Lift Ring		DESIGN	Y. Yan
TITLE:		DATE	
SIZE: CAGE CODE		DATE	
DWG. NO. 8000089		DATE	
REV 3		DATE	
SCALE 1:2		DATE	
WEIGHT: 1931.43 g		DATE	
SHEET 1 OF 1		DATE	

THIS DOCUMENT, AND THE INFORMATION CONTAINED THEREIN, IS THE PROPERTY OF MAGSWITCH TECHNOLOGY WORLDWIDE AND IS CONFIDENTIAL. ACCORDINGLY, THIS INFORMATION IS SUBMITTED TO YOU UNDER A NON-DISCLOSURE AGREEMENT. IT IS NOT TO BE REPRODUCED, COPIED, OR LOANED IN PART OR IN WHOLE, NOR IS THE INFORMATION TO BE RELATED TO ANY OTHER INDIVIDUAL OR COMPANY EXCEPT AS MTW FIRST AUTHORIZES. THIS DOCUMENT CONSTITUTES AN AGREEMENT TO THESE RESTRICTIONS.

INTERPRET DRAWING PER: ISO 2768-M
DIMENSIONS IN MILLIMETERS
THIRD ANGLE PROJECTION
DO NOT SCALE