

The Magswitch 6 Ton Aluminum Adjustable Beam Jack is perfectly suited to pulling ferrous steel flat against stiffener beams, eliminating air gaps to allow for more efficient welding. This tool features two Magswitch MLAY 1000x6 arrays capable of delivering a maximum breakaway force of 12203 lbs. This tool can reduce welding time considerably and minimize the need for extra welding jigs.

Features

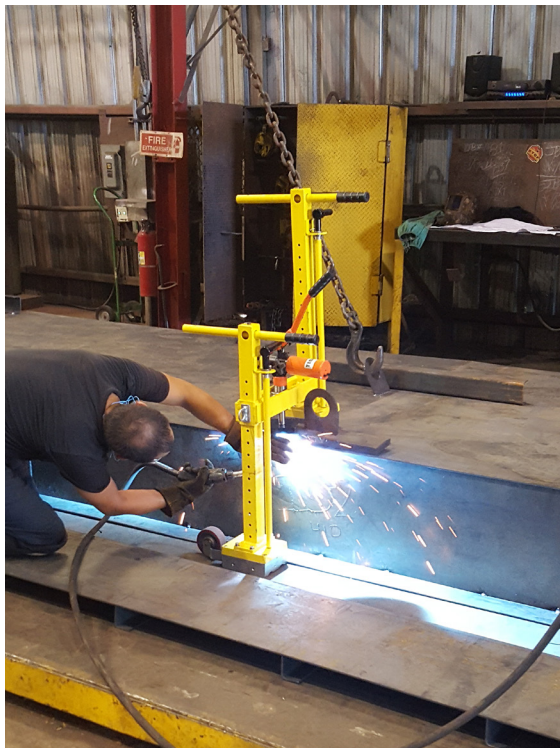
- Removes air gaps between structural members (stiffeners) and their base material.
- Works stronger on thinner materials
- Patented shallow field technology offers the ability to weld closely to magnets without having a negative effect on the weld and gives you superior grip on thinner material.
- Lighter than other competitors.
- Magnet turns completely OFF and stays clean.

Lifters make contact with the base material and are turned on by simply actuating two handles. Once the magnets are actuated, the hydraulic jack can be pumped. This will reduce the air gap and allow for easy welding.



Also available with Gimbal Accessory #8800770

With both gimbals installed, the magnetic feet can conform to uneven surfaces by swiveling 12° in either direction. Includes two gimbals and a ram extension.



Quick Specs

Magnetic Strength*	12203 lbs/5535 kg
Full Saturation Thickness	1" / 25.4 mm
Net Weight	152.2 lbs/ 69. kg
Max Overall Height	40" / 1012 mm
Magnetic Pole Footprint	(2x) 98 x 493 mm

* Max Breakaway determined in laboratory environment on 2" thick SAE1018 Steel with surface roughness 63 micro inches.
Need more information? Find it on magswitch.com.au!