

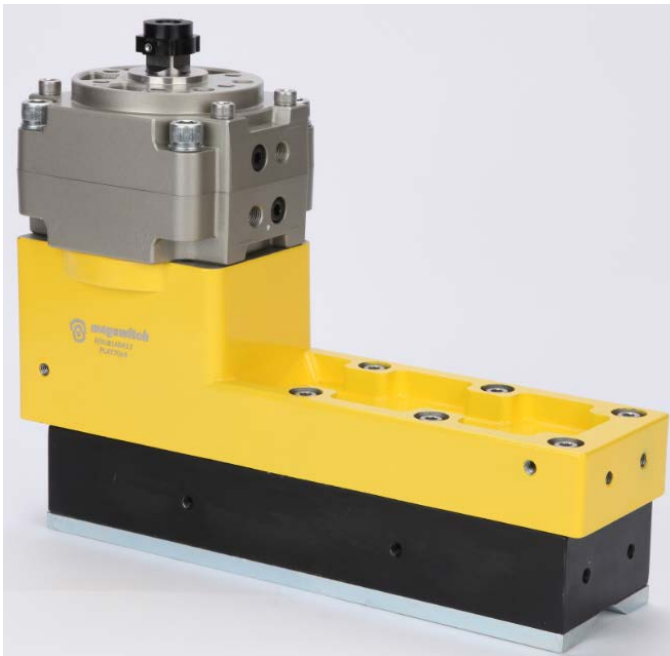


Magswitch Technology, Inc.
1355 Horizon Avenue
Lafayette, Colorado 80026
Magswitch.com.au
303-468-0662

Magswitch PLAY70x4 MDC EH

P/N: 8140876

Magswitch LAY series utilizes field interaction between individual magnets to increase depth of field and spread the attractive force over a larger footprint. This allows for greater working loads and increased control over larger work pieces. With customizable pole shoes to fit almost any application, the LAY is a great all around tool that is perfect for picking pipe and round as well as large plate steel.

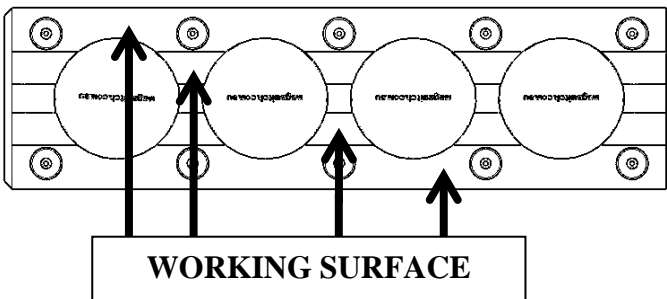


WARNING!
**Do Not Operate Unless In
Contact With Ferrous Target**

SPECIFICATIONS

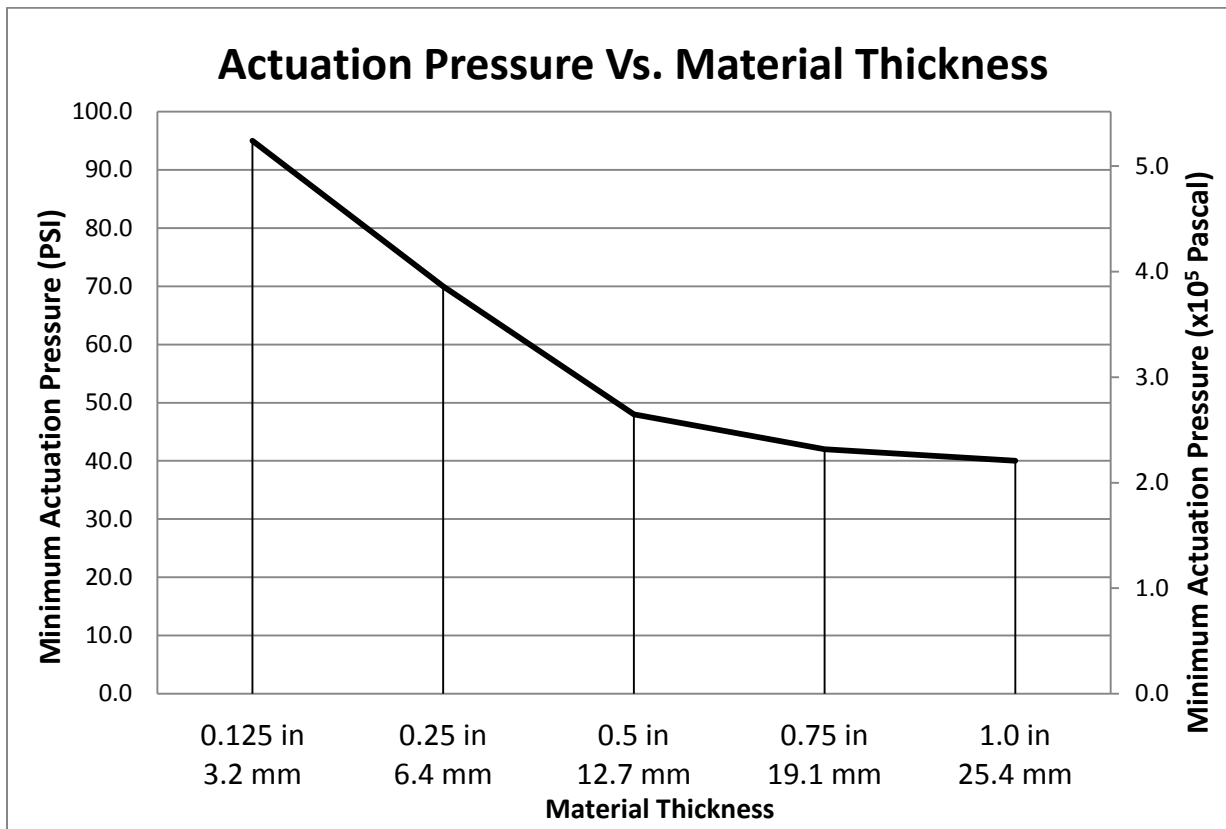
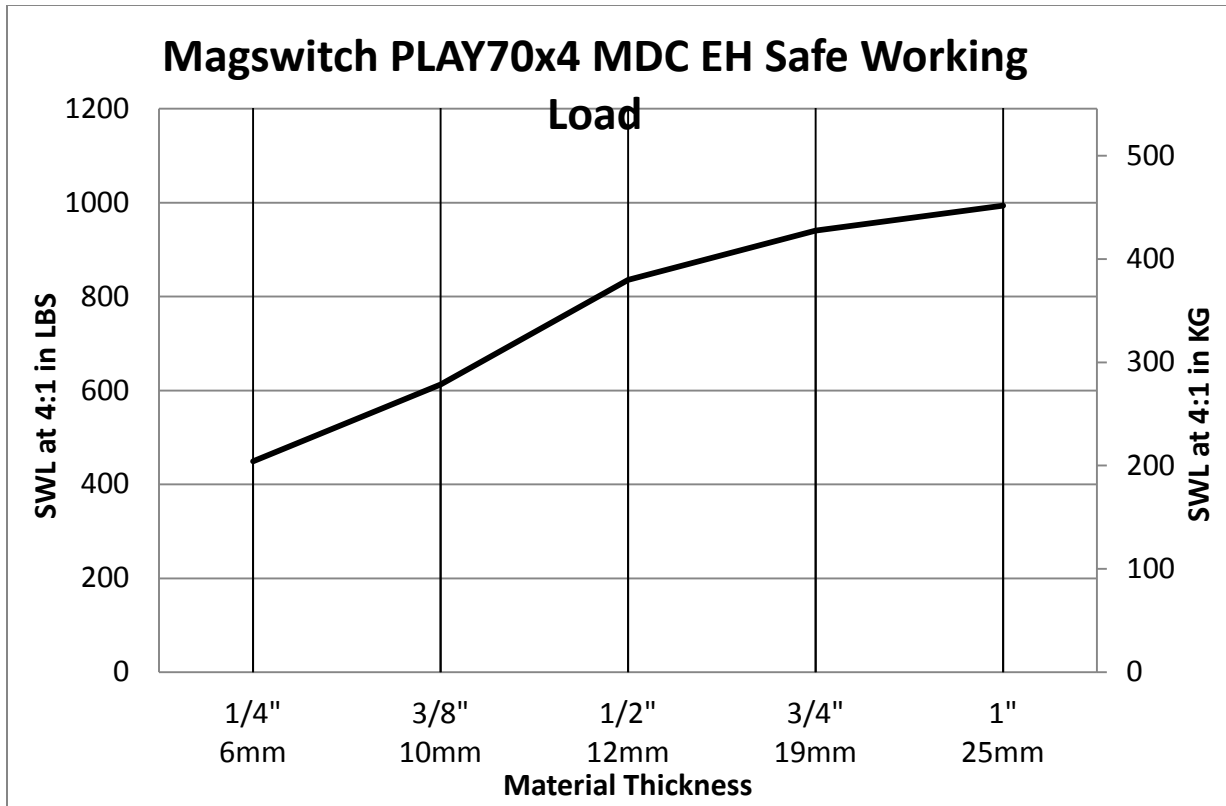
P/N: 8140876 - MAGSWITCH PLAY70x4 MDC EH

Max Breakaway*	3900 lbs/1773 kg
Working Load 4:1*	975 lbs/443 kg
Full Saturation Thickness	3/4" / 19.05mm
Max Safe Shear*	283 lbs/128 kg
Minimum Thickness for De-Stack	1/2" / 12.7mm
Min Actuation Pressure	55 psi/2.8x10 ⁵ pa
Max Actuation Pressure	145 psi/1x10 ⁶ pa
Net Weight	53.6 lbs/24.3 kg
Air Port Thread	Rc 1/4
Mounting Thread	M8x1.25
Overall Height	300.5 mm
Magnetic Pole Footprint	336x97.6 mm
Actuator Part Number	280032



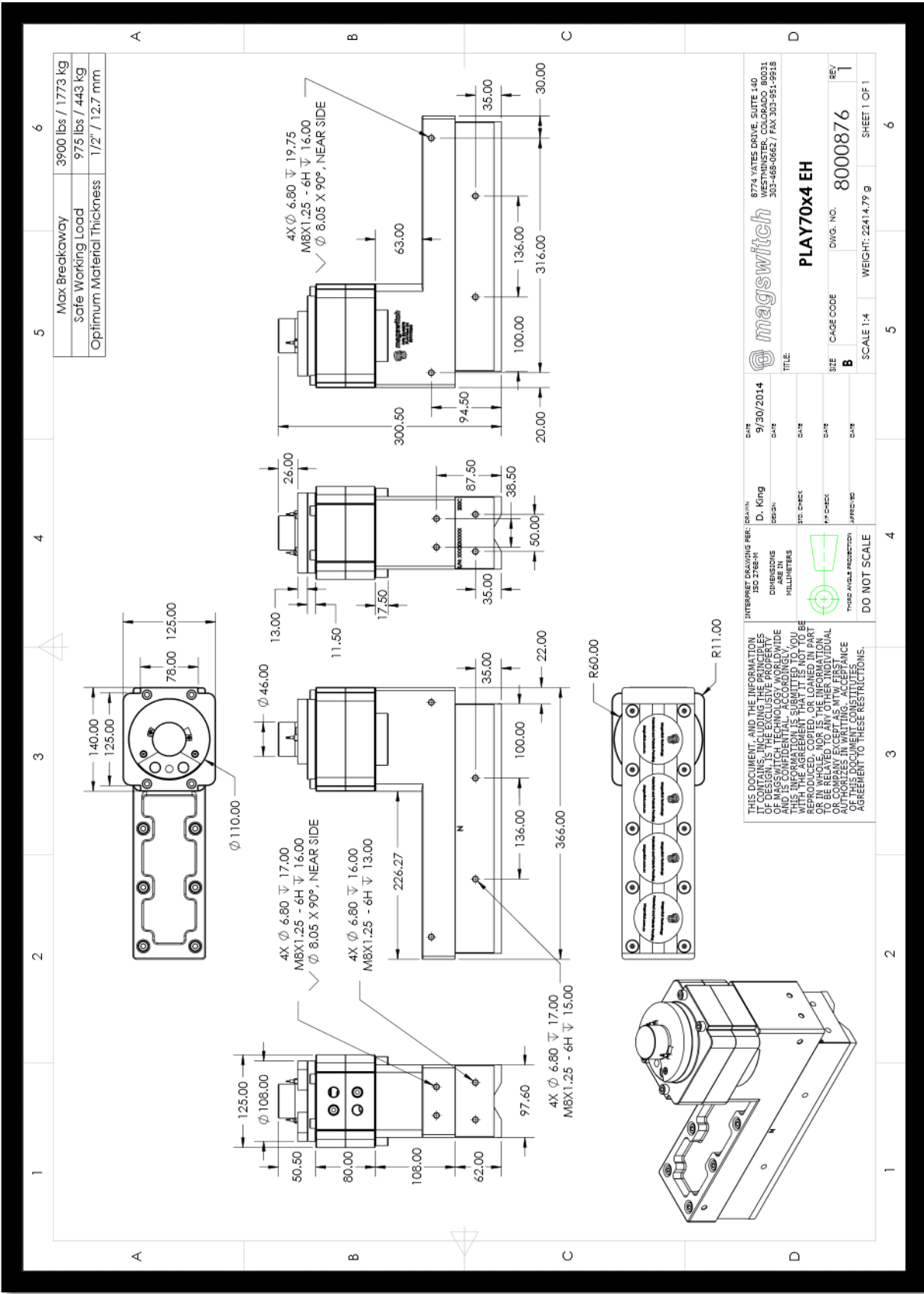
Part Number 110644
Revision Date: April 25, 2014

* Max Breakaway determined in laboratory environment on 2" thick SAE1018 Steel with surface roughness 63 micro inches. Many factors contribute to the actual breakaway force in each application. Always test the magswitch in each application before deployment. Refer to the magswitch information booklet for more information.



Part Number 110644
 Revision Date: April 25, 2014

* Max Breakaway determined in laboratory environment on 2" thick SAE1018 Steel with surface roughness 63 micro inches. Many factors contribute to the actual breakaway force in each application. Always test the magswitch in each application before deployment. Refer to the magswitch information booklet for more information.



Part Number 110644
 Revision Date: April 25, 2014