



Magswitch Technology, Inc.  
1355 Horizon Avenue  
Lafayette, Colorado 80026  
Magswitch.com.au  
303-468-0662

## Magswitch PLAY50x4 MDC EH

### P/N: 8140874

Magswitch LAY series utilizes field interaction between individual magnets to increase depth of field and spread the attractive force over a larger footprint. This allows for greater working loads and increased control over larger work pieces. With customizable pole shoes to fit almost any application, the LAY is a great all around tool that is perfect for picking pipe and round as well as large plate steel.

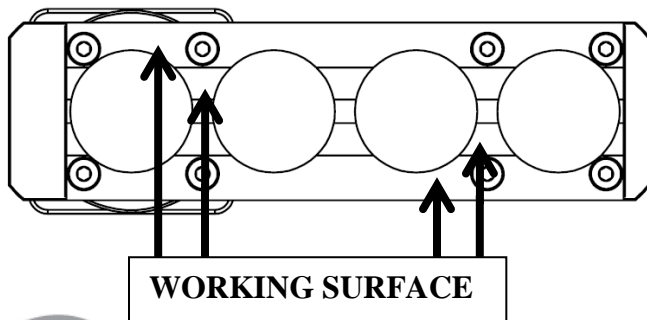


**WARNING!**  
**Do Not Operate Unless In**  
**Contact With Ferrous Target**

#### SPECIFICATIONS

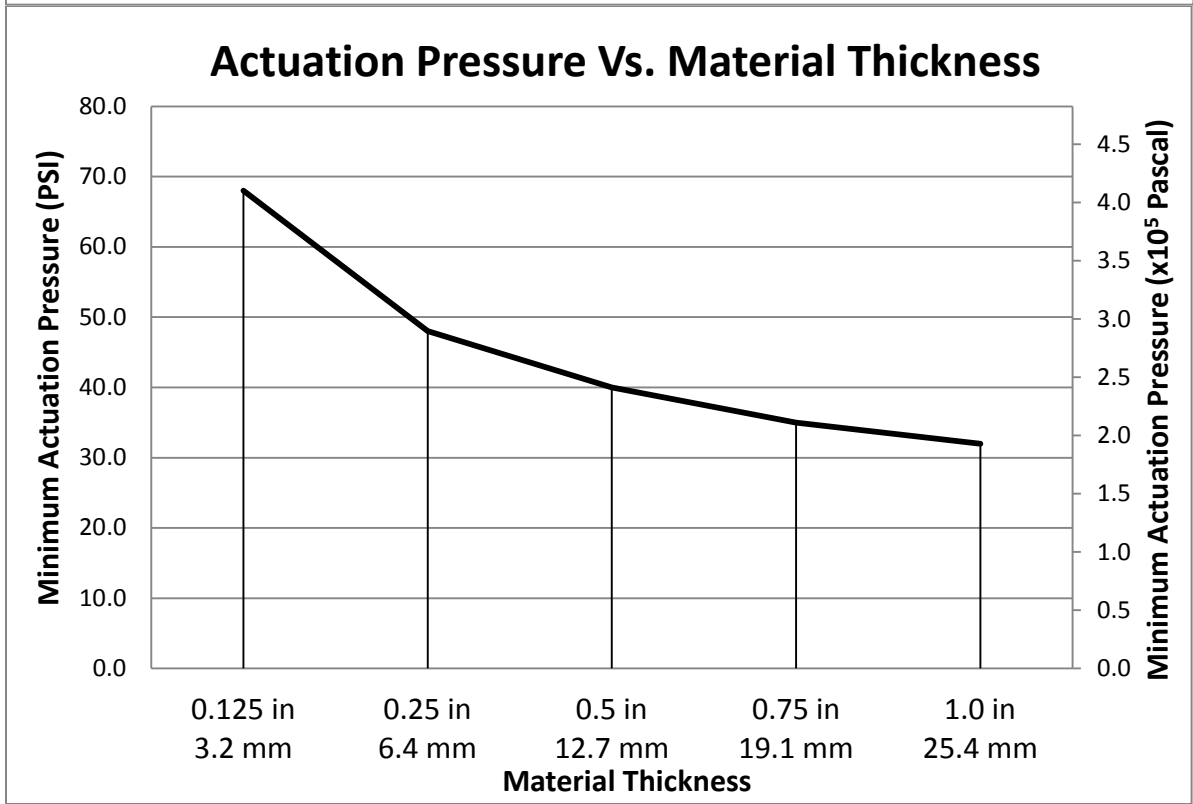
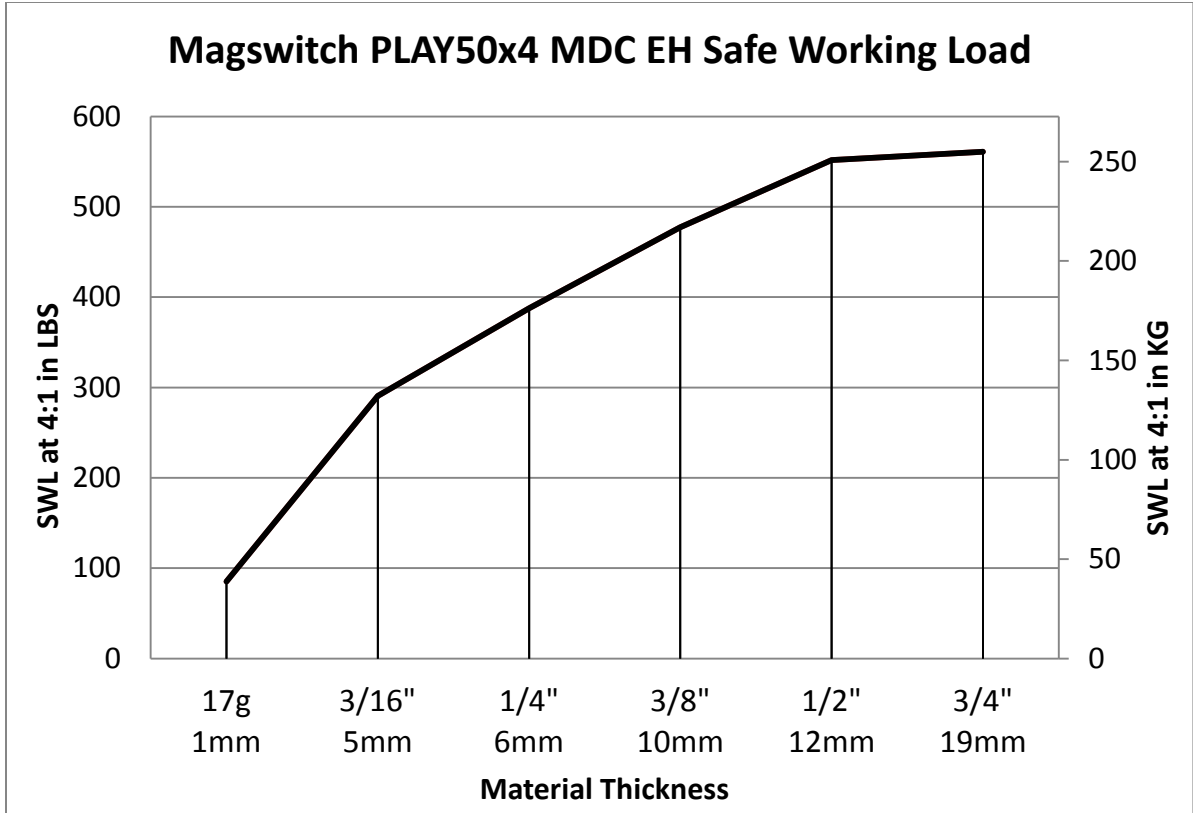
##### P/N: 8140874 - MAGSWITCH PLAY50x4 MDC EH

Max Breakaway*	2286 lbs/1037 kg
Working Load 4:1*	572 lbs/259 kg
Full Saturation Thickness	1/2" / 12.7 mm
Max Safe Shear*	449 lbs/204 kg
Minimum Thickness for De-Stack	3/8" / 9.5 mm
Min Actuation Pressure	30 psi/2.1x10 <sup>5</sup> pa
Max Actuation Pressure	145 psi/1x10 <sup>6</sup> pa
Net Weight	30 lbs/13.6 kg
Air Port Thread	Rc 1/4
Mounting Thread	M8x1.25
Overall Height	253.82 mm
Magnetic Pole Footprint	223.0x71.12 mm
Actuator Part Number	280018



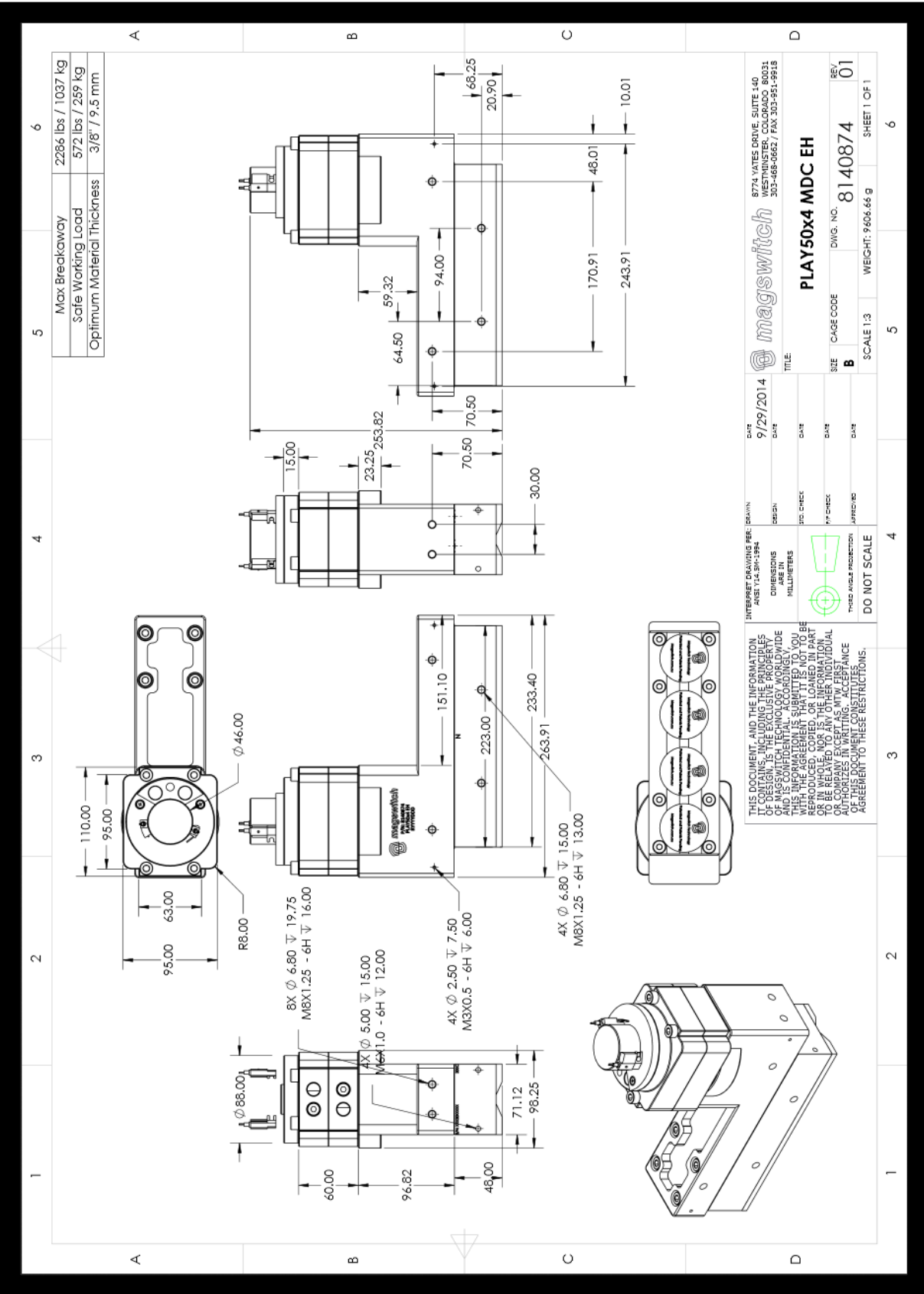
Part Number 1101076  
Revision Date: July 28, 2014

\* Max Breakaway determined in laboratory environment on 2" thick SAE1018 Steel with surface roughness 63 micro inches. Many factors contribute to the actual breakaway force in each application. Always test the magswitch in each application before deployment. Refer to the magswitch information booklet for more information.



Part Number 1101076  
Revision Date: July 28, 2014

\* Max Breakaway determined in laboratory environment on 2" thick SAE1018 Steel with surface roughness 63 micro inches. Many factors contribute to the actual breakaway force in each application. Always test the magswitch in each application before deployment. Refer to the magswitch information booklet for more information.



DATE	9/29/2014	DATE	
DESIGN		DATE	
STG CHECK		DATE	
PP CHECK		DATE	
APPROVED		DATE	

INTERSHIFT DRAWING REF: DRAWING	8774 VATES DRIVE, SUITE 140
ANSI Y14.5M-1994	WESTMINSTER, COLORADO 80031
COMPARISON	303-468-0862 / FAX: 303-951-9918
UNITS	
IN MILLIMETERS	
IN INCHES	
THIRD ANGLE PROJECTION	
DO NOT SCALE	

THIS DOCUMENT AND THE INFORMATION CONTAINED HEREIN ARE THE SOLE PROPERTY OF MAGSWITCH TECHNOLOGY AND SHALL REMAIN THE PROPERTY OF MAGSWITCH TECHNOLOGY. THIS INFORMATION IS SUBMITTED TO YOU FOR YOUR INFORMATION ONLY AND IS NOT TO BE REPRODUCED, COPIED, OR TRANSMITTED IN ANY FORM OR BY ANY MEANS, ELECTRONIC OR MECHANICAL, INCLUDING PHOTOCOPYING, RECORDING, OR BY ANY INFORMATION STORAGE AND RETRIEVAL SYSTEM, WITHOUT THE WRITTEN PERMISSION OF MAGSWITCH TECHNOLOGY. ACCEPTANCE OF THIS DOCUMENT CONSTITUTES AGREEMENT TO THESE RESTRICTIONS.

DATE	9/29/2014	DATE	
DESIGN		DATE	
STG CHECK		DATE	
PP CHECK		DATE	
APPROVED		DATE	

DATE	9/29/2014	DATE	
DESIGN		DATE	
STG CHECK		DATE	
PP CHECK		DATE	
APPROVED		DATE	

**magswitch**  
**PLAY50x4 MDC EH**  
 CAGE CODE DWG. NO. 8140874 REV. 01  
 SCALE 1:3 WEIGHT: 9406.66 g SHEET 1 OF 1



Part Number 1101076  
 Revision Date: July 28, 2014