



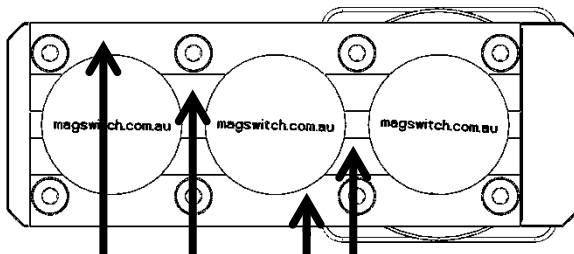
Magswitch Technology, Inc.  
1355 Horizon Avenue  
Lafayette, Colorado 80026  
Magswitch.com.au  
303-468-0662

## Magswitch PLAY50x3 EH

### P/N: 8140838

Magswitch LAY series utilizes field interaction between individual magnets to increase depth of field and spread the attractive force over a larger footprint. This allows for greater working loads and increased control over larger work pieces. With customizable pole shoes to fit almost any application, the LAY is a great all around tool that is perfect for picking pipe and round as well as large plate steel.

**WARNING!**  
**Do Not Operate Unless In**  
**Contact With Ferrous Target**



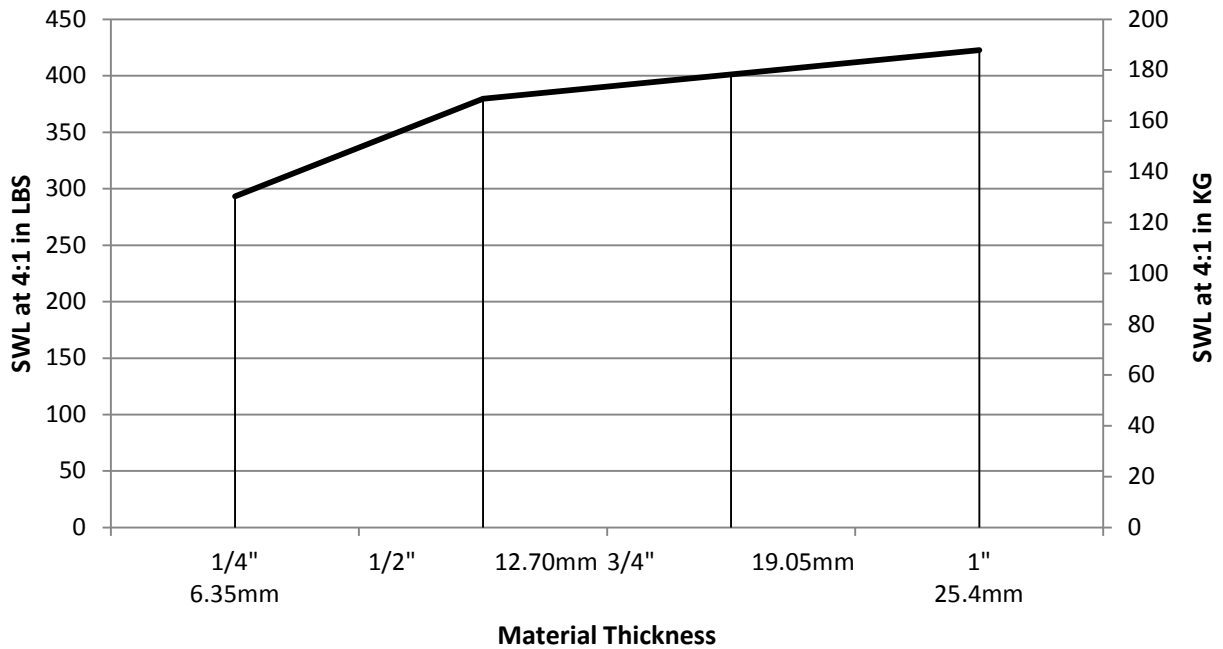
**WORKING SURFACE**

| SPECIFICATIONS                              |                                 |
|---|---------------------------------|
| <b>P/N: 8140838 - MAGSWITCH PLAY50x3 EH</b> |                                 |
| Max Breakaway*                              | 1652 lbs/751 kg                 |
| Working Load 4:1*                           | 413 lbs/187 kg                  |
| Full Saturation Thickness                   | 1/2" / 12.7mm                   |
| Max Safe Shear*                             | 169 lbs                         |
| Minimum Thickness for De-Stack              | 3/8" / 9.5mm                    |
| Min Actuation Pressure                      | 17.1 psi/1.2x10 <sup>5</sup> pa |
| Max Actuation Pressure                      | 145 psi/1x10 <sup>6</sup> pa    |
| Net Weight                                  | 17.4 lbs/7.9 kg                 |
| Air Port Thread                             | Rc 1/4                          |
| Mounting Thread                             | M8x1.25                         |
| Overall Height                              | 253.82 mm                       |
| Magnetic Pole Footprint                     | 165.80x71.12 mm                 |
| Actuator Part Number                        | 280018                          |

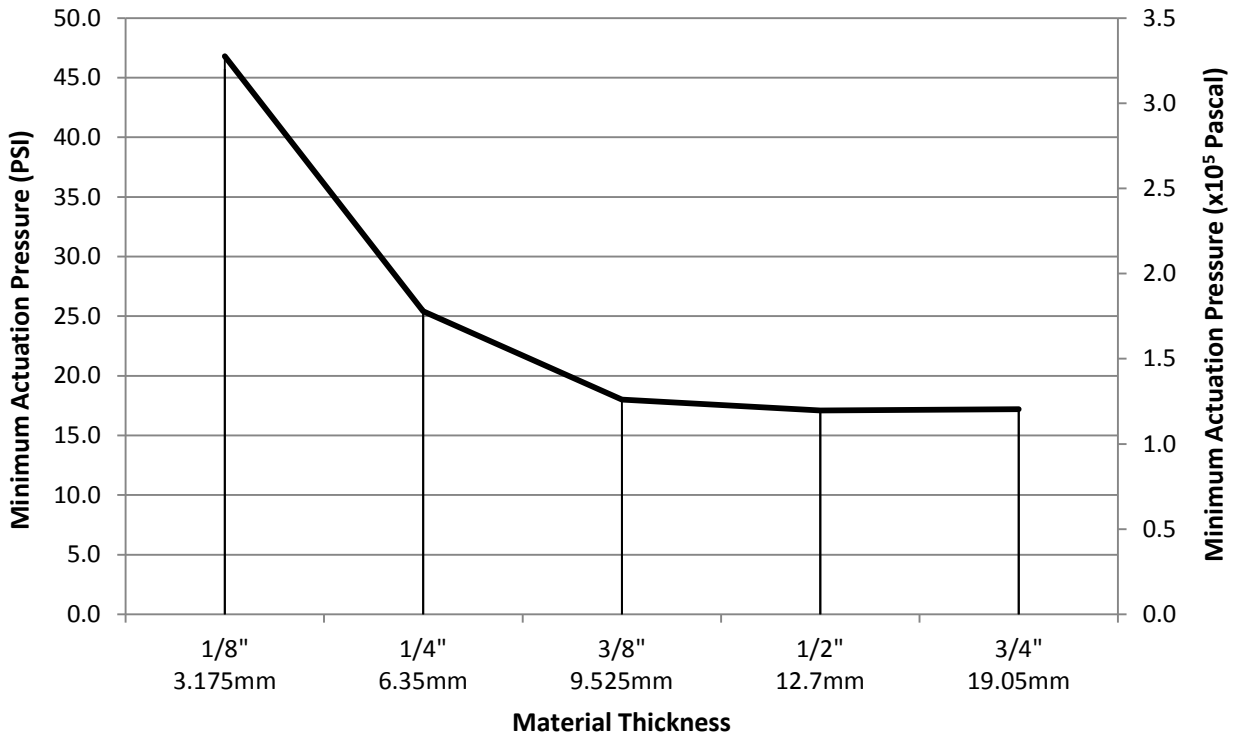
Part Number 110646  
Revision Date: April 25, 2014

\* Max Breakaway determined in laboratory environment on 2" thick SAE1018 Steel with surface roughness 63 micro inches. Many factors contribute to the actual breakaway force in each application. Always test the magswitch in each application before deployment. Refer to the magswitch information booklet for more information.

### Magswitch PLAY50x3 EH Safe Working Load

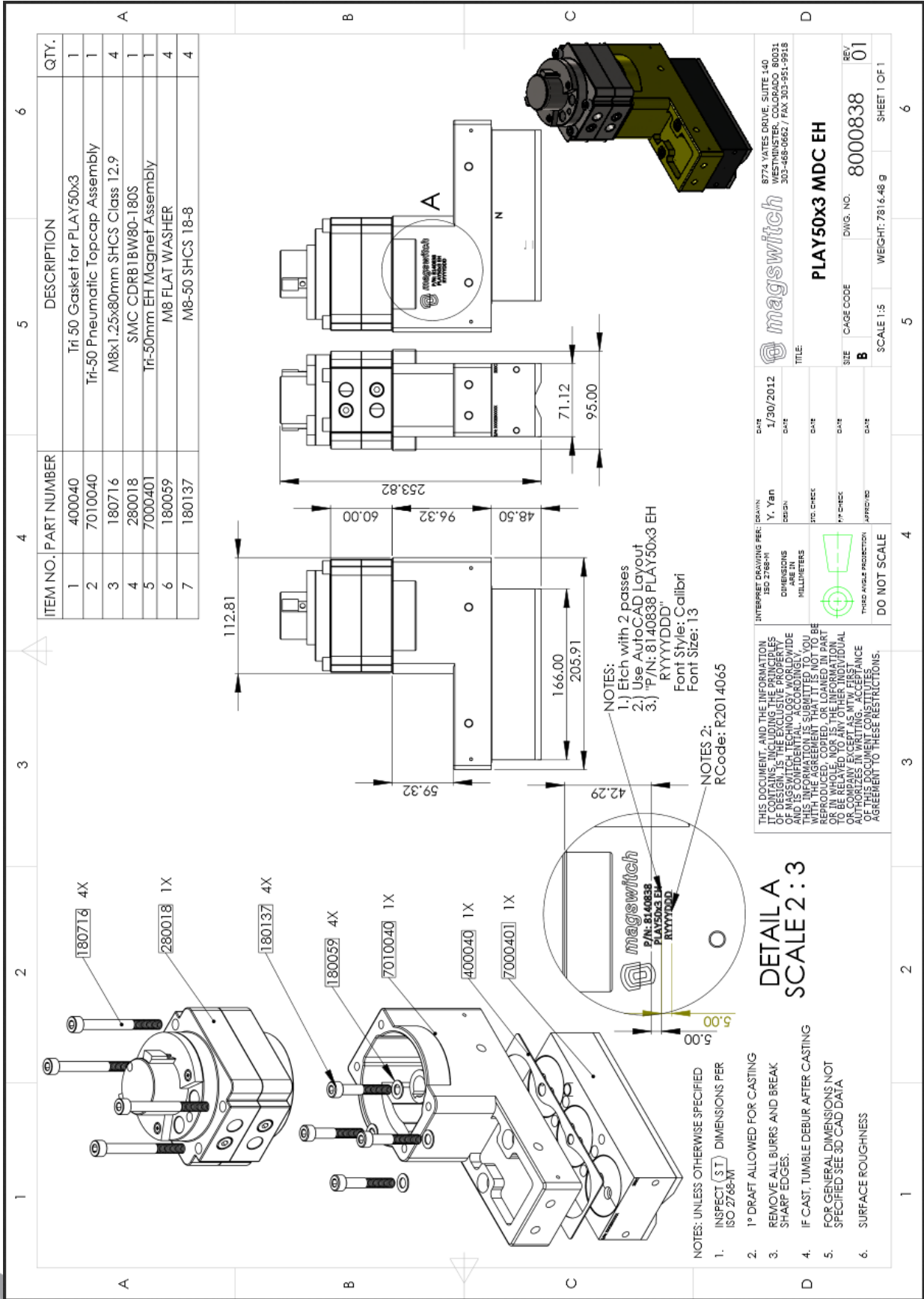


### Actuation Vs. Material Thickness



\* Max Breakaway determined in laboratory environment on 2" thick SAE1018 Steel with surface roughness 63 micro inches. Many factors contribute to the actual breakaway force in each application. Always test the magswitch in each application before deployment. Refer to the magswitch information booklet for more information.





Part Number 110646  
Revision Date: April 25, 2014