



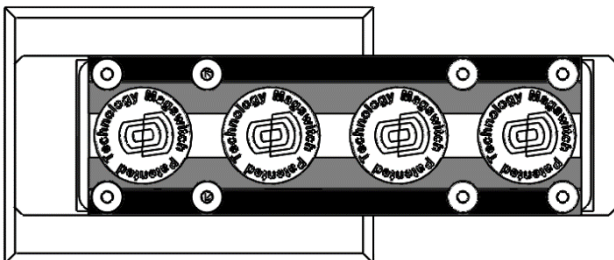
Magswitch Technology, Inc.
1355 Horizon Ave
Lafayette, Colorado 80026
Magswitch.com.au
303-468-0662

Magswitch PLAY20x4 NAAMS High Heat

P/N: 8140957

Magswitch LAY series utilizes field interaction between individual magnets to increase depth of field and spread the attractive force over a larger footprint. This allows for greater working loads and increased control over larger work pieces. With customizable pole shoes to fit almost any application, the LAY is a great all around tool that is perfect for picking pipe and round as well as large plate steel.

WARNING!
Do Not Operate Unless In
Contact With Ferrous Target



WORKING SURFACE
BLACK=BEST
GRAY=MODERATE

SPECIFICATIONS

P/N: 8140957 - MAGSWITCH PLAY20x4 NAAMS High Heat

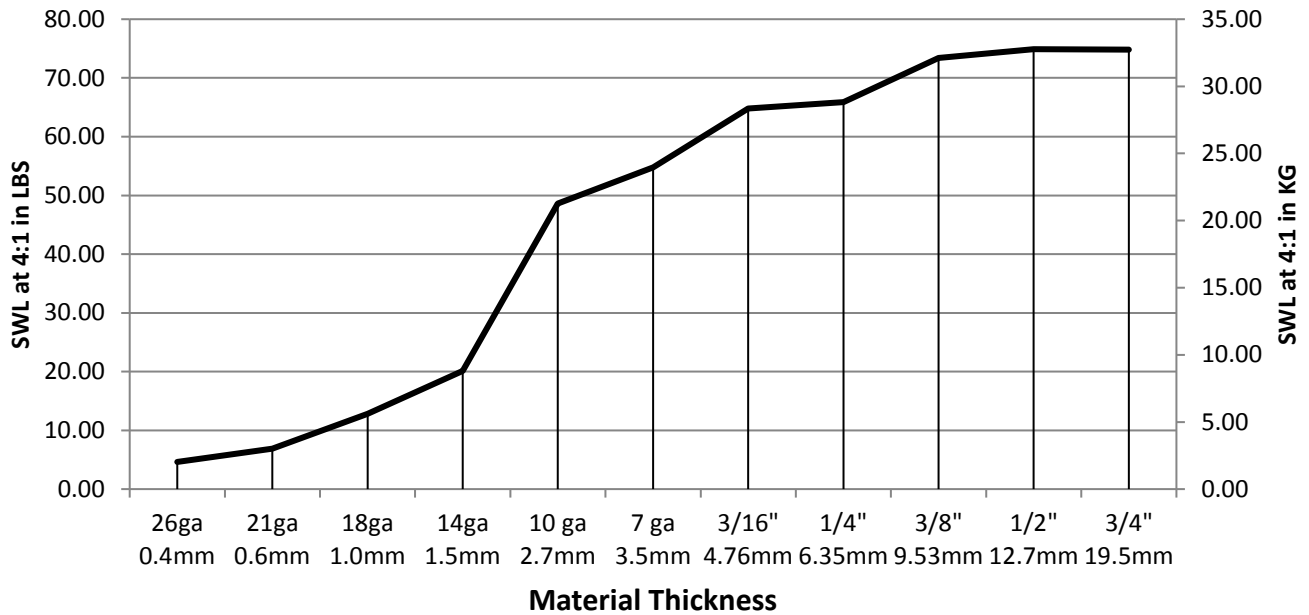
Max Breakaway*	288.42 lbs/131.1kg
Working Load 4:1*	72.1 lbs/32.8kg
Full Saturation Thickness	3/8" / 9.5mm
Max Shear 2:1*	41.8 lbs/19.0 kg
Minimum Thickness for De-Stack	3/8" /9.5 mm
Min Actuation Pressure	30 psi/2.1x10 ⁵ pa
Max Actuation Pressure	145 psi/1.0x10 ⁶ pa
Off Target Pressure	56 psi/ 3.9x10 ⁵ pa
Volume of Actuator	15 cm ³
Net Weight	2.62 lbs/1.19 kg
Air Port Thread	M5x0.8
Mounting Thread	6-M8-6 NAAMS
Overall Height	138.76 mm
Magnetic Pole Footprint	96.2x31.12 mm

* Max Breakaway determined in laboratory environment on 2" thick SAE1018 Steel with surface roughness 63 micro inches. Many factors contribute to the actual breakaway force in each application. Always test the magswitch in each application before deployment. Refer to the magswitch information booklet for more information.

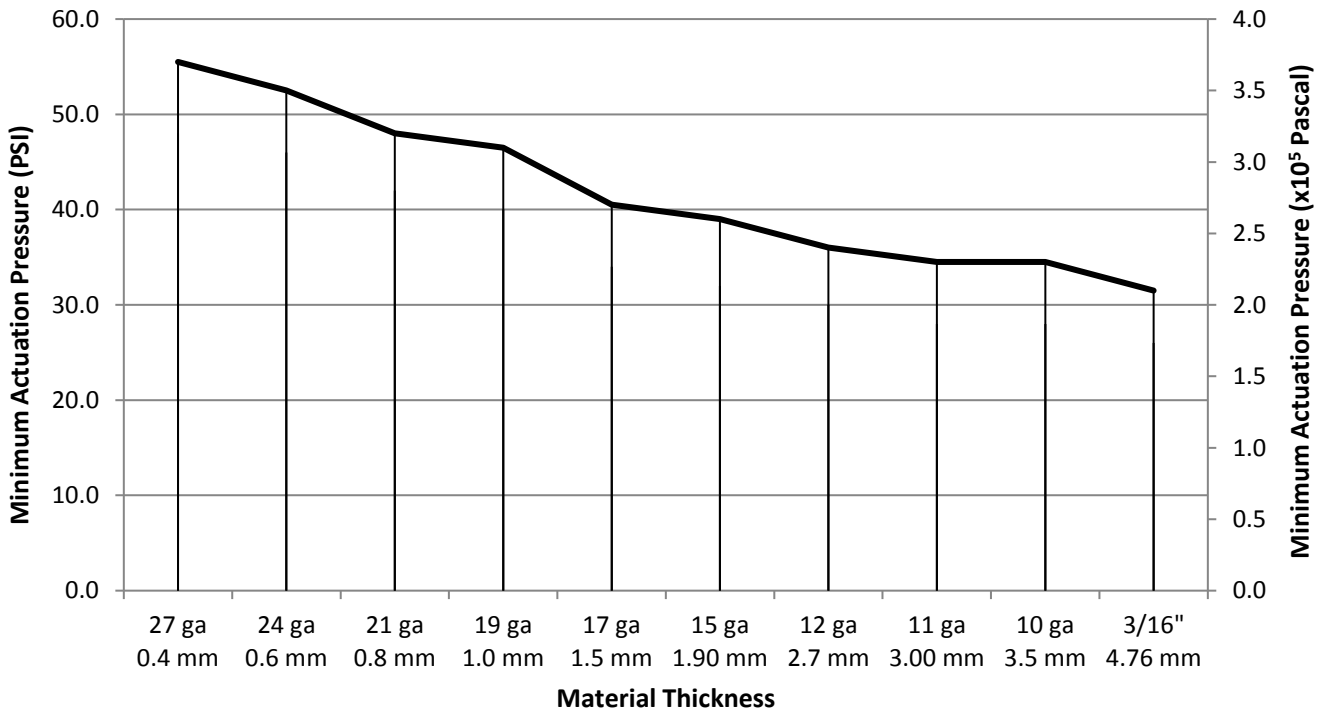


Part Number 1101227
Revision Date: Nov. 11 2016

Magswitch PLAY20x4 Safe Working Load

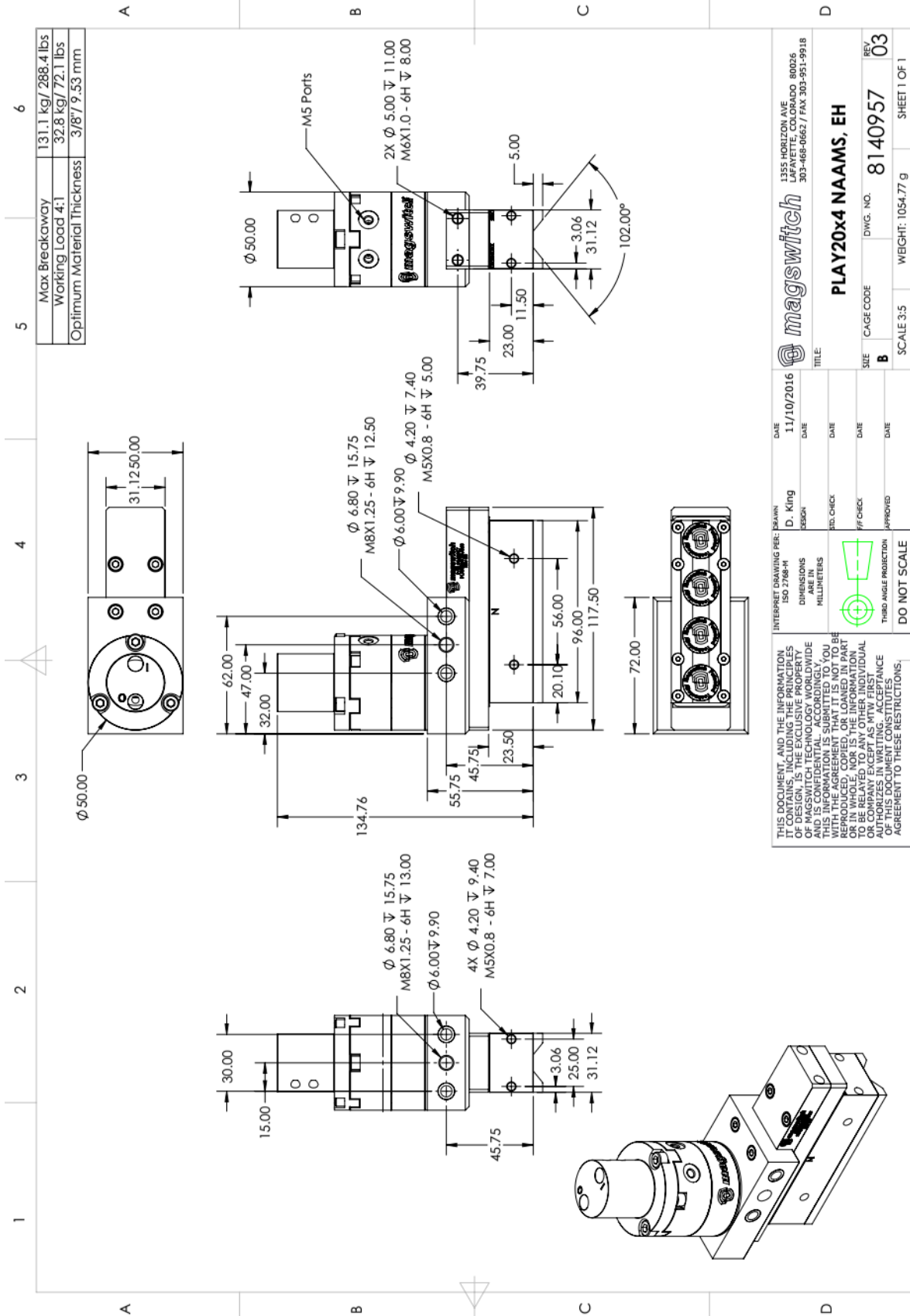


Actuation Vs. Material Thickness



Part Number 1101227
 Revision Date: Nov. 11 2016

* Max Breakaway determined in laboratory environment on 2" thick SAE1018 Steel with surface roughness 63 micro inches. Many factors contribute to the actual breakaway force in each application. Always test the magswitch in each application before deployment. Refer to the magswitch information booklet for more information.



		1255 HORIZON AVE LAFAYETTE, COLORADO 80026 303-468-0662 / FAX 303-951-9918	
TITLE: PLAY20x4 NAAMS, EH		DATE: 11/10/2016	DRAWN BY: D. King
SIZE: B	CAGE CODE:	DIMENSIONS ARE IN MILLIMETERS	REGION:
SCALE: 3:5	DWG. NO.: 8140957	THIRD ANGLE PROJECTION	INTERPRET DRAWING PER:
WEIGHT: 1054.77 g	REV: 03	DO NOT SCALE	THIS DOCUMENT AND THE INFORMATION IT CONTAINS, INCLUDING THE PRINCIPLES OF DESIGN, IS THE EXCLUSIVE PROPERTY OF MAGSWITCH. ALL RIGHTS ARE RESERVED AND IS CONFIDENTIAL. ACCORDINGLY, THIS INFORMATION IS SUBMITTED TO YOU HEREUNDER UNDER THE UNDERSTANDING THAT IT IS NOT TO BE REPRODUCED, COPIED, OR LOANED IN PART OR IN WHOLE, NOR IS THE INFORMATION TO BE RELATED TO ANY OTHER INDIVIDUAL OR ENTITY WITHOUT THE EXPRESS WRITTEN AUTHORIZATION IN WRITING. ACCEPTANCE OF THIS DOCUMENT CONSTITUTES AGREEMENT TO THESE RESTRICTIONS.



Part Number 1101227
 Revision Date: Nov. 11 2016